

# inside



[www.soptv.org](http://www.soptv.org)

**Southern Oregon Public Television**  
Connecting Our Community

A RON HOWARD FILM

# EIGHT DAYS A WEEK

## THE TOURING YEARS

THE BAND YOU KNOW. THE STORY YOU DON'T.

**Saturday**  
**November 25 at 8 pm**



**Contact SOPTV:**  
P.O. Box 4688 - Medford, OR 97501  
(541) 779-0808  
[info@soptv.org](mailto:info@soptv.org)



# November 2017

MEMBER GUIDE

Sustainers know that a *little* each month makes a *BIG* difference for SOPTV... and it makes your life a little easier.

Become a Sustainer of SOPTV!

- Automatic • Ongoing • Monthly



Call *TODAY* to become a sustainer – 844.567.0808

Table of Contents

Daytime Schedule . . . . . 6-9

Primetime Schedule . . . . . 10-17

Select Program Descriptions . . . . . 18-27

Overnight Listings for SOPTV-PBS . . . . . 28

SOPTV’s Business Partners . . . . . 29

Repeat Schedule for SOPTV-PBS . . . . . 30-31

Find program listings for all 3 channels!



Digital Channel Guide by Area and Service Provider

Area	Antenna			Charter			Satellite		
Medford/Central Pt.	8.1	8.2	8.3	8	192	191	8	N/A	N/A
Ashland	8.1	8.2	8.3	8/8*	192	191	8	N/A	N/A
Grants Pass	8.1	8.2	8.3	8	192	191	8	N/A	N/A
Klamath Falls	22.1	22.2	22.3	8	192	191	8	N/A	N/A
Roseburg	8.1	8.2	8.3	7	189	188	8	N/A	N/A
Talent/Phoenix	8.1	8.2	8.3	8	192	191	8	N/A	N/A
Jacksonville	8.1	8.2	8.3	8	192	191	8	N/A	N/A
Brookings	N/A	N/A	N/A	8	192	191	8	N/A	N/A

For additional areas, please see [www.soptv.org](http://www.soptv.org)

\*Ashland Home Net offers all SOPTV services to viewers equipped for digital cable. Questions? Please call 541-779-0808.

# AUTUMN NOVEMBER

On **SOPTV**  PBS

## **Silent Witness**

Emilia Fox is Doctor Nikki Alexander in the award-winning crime drama series about a team of forensic pathologists. Always curious and open-minded, the irrepressible Nikki can be impetuous, but is capable of showing her mettle. Since her arrival, she's grown into a skilled and confident pathologist. The pathologists spend much of their time in the Lyell Centre's laboratory, so a huge amount of effort is spent ensuring this aspect of the series is authentic.

**Saturdays at 10 pm**



On **SOPTV**  
**WORLD**

## **Mystic Voices: Story of the Pequot War**

The Pequot War was a pivotal event in American history. This two-part series presents a balanced view of events, underlying causes, consequences, and legacy of the first declared war in American history. The rhetoric of the English Puritans made their victory over the "heathens" a significant event in the early history of the U.S. and crystallized the attitudes and myths that became the foundations of a nation.

**Saturday, Nov. 18 at 9 & 10 pm**



On **SOPTV**  
**@create**

## **Destination Craft**

Jim West travels with a small group of crafters to discover, participate, and celebrate in the traditions, arts, culture, scenery, and food of each destination. They travel to South Asia, where they visit a group of monks in the Kathmandu Valley in Nepal who make colored sand Mandela designs in a Buddhist Temple. In India, Jim and the crafters participate in a rangoli design workshop and learn savory tips from a master chef for making an Indian dish.

**Wednesday, 6 am & Noon**





# Members' Message



Mark Stanislawski

## SOPTV LAUNCHES TEACHER COMMUNITY PROGRAM

Across the country, SOPTV and other PBS member stations have an enduring dedication to education. A core value of our programming service is to provide television and content that offers an opportunity to learn.

PBS LearningMedia, a partnership of PBS and the WGBH Educational Foundation (Boston), has been a key distribution tool for local stations to reach teachers and the children in their classrooms. This media-on-demand service offers educators access to the best of public television and delivers research-based, classroom-ready digital learning objects to engage students around standards-aligned curriculum. I am personally excited about this project since I used to manage (in the 1980s) PBS Video, which distributed programming to schools, colleges, and libraries. Today's technology significantly expands learning opportunities. Over two million educators and over 40 million students now have access to more than 120,000 curriculum-aligned digital resources!

This summer SOPTV joined with four other rural stations to launch the PBS Teacher Community Program and other educator support services in Idaho, Iowa, North Dakota, and Montana. We see this as a tremendous opportunity to help our community and region. As a state, Oregon ranks third from last for high school graduation. Southern Oregon educators face many more challenges than urban schools in the Willamette Valley due to obstacles related to teacher training opportunities, lack of meaningful use of technology in the classroom and in student homes, and general deficit of best practices technology support and resources. As a result southern Oregon schools exhibit lower test scores than the state average, particularly in math and science.

To deliver services to local educators, SOPTV has hired Ben Garcia as a Teacher Ambassador to work with local educators to promote PBS LearningMedia and to assist teachers with implementing meaningful and effective technology integration into their teaching practices. Ben joined SOPTV in May and has hit the ground running. On October 14 we had our first Teacher Summit for area educators. More teacher support activities will be announced over the coming months.

We're very excited to be working with southern Oregon teachers and administrators to bring new resources and tools, a mission that has always been a core pillar of Public Broadcasting. I'll report back to you on this project as it expands.

A large, stylized handwritten signature of Mark Stanislawski in black ink. The signature is written over a large, light-colored 'SOPTV' logo that spans the width of the page.

Mark Stanislawski  
President & CEO



## — SOPTV's Mission —

*As an independent media voice, Southern Oregon Public Television enriches our understanding of the past, enlivens our present and prepares us for the future by connecting our community with quality local and national programming that educates, enlightens, inspires and entertains.*

### BOARD OF DIRECTORS

*Chair:* Dick Robertson

*Treasurer:* Fred Willms

*President & CEO:* Mark Stanislawski

*Jackson County:* Joe Foley, Don Lewis, Dick

Robertson, Dr. Susan Walsh, Fred Willms

*Klamath County:* Taylor David

### COMMUNITY ADVISORY BOARD

*Jackson County:* Ken Ampel M.D., Terry

Bateman, Ron Demele, Andy Draper, Brenda

Mead, Lucy Strasburg, Steve Sutfin,

Darlene V. Taylor

*Klamath County:* Byard Pidgeon

### SOPTV CONTACT INFORMATION

P.O. Box 4688, Medford, OR 97501

541-779-0808

info@soptv.org • www.soptv.org

### STAFF

#### *Marketing & Development*

Robert Mead, *Director of Corporate Support*

Linda Pinkham, *Communications Manager*

David Daniels, *Communications Assistant &  
Web Development*

Ben Garcia, *Teacher Community Program*

Jennifer Rodriguez, *Membership Assistant*

#### *Engineering/Operations*

Gretchen Isaacs, *Traffic Coordinator*

Bruce Johnson, *Media Assets Coordinator*

Barbara Weaver, *Media Assets Coordinator*

David Aragon, *Master Control*

#### *Content & Services*

Brad Fay, *Director of Content & Services*

Jeff LeBeau, *Production Manager & Producer*

Jan Abramsson, *Producer & Director*

#### *Financial/Administration*

Joyce Laidlaw, *Administration Manager*



## The eye care specialty team

Whether you need routine eye care or more advanced surgical services, Medical Eye Center provides a level of care and experience you won't find anywhere else. All of our surgeons are fellowship trained and specialize in Cataracts, Glaucoma, LASIK, Corneal Transplants, Retinal Care, and Facial Cosmetic Surgery. New patients are always welcome!

### MAKE YOUR APPOINTMENT TODAY

Ben Taylor, OD | Matthew Hauck, MD | Brendan Butler, MD | Craig Lemley, MD | Matt Oliva, MD | Paul Jorizzo, MD | John Welling, MD  
James Davidian, MD | Heather French, OD | Helen Koenigsman, MD | Stacey Hoins, OD | Paul Imperia, MD | Abby Coats, PA-C



**MEDICAL EYE CENTER**

541-779-4711 | www.medicaleyecenter.com

For over 100 years, improving vision in our community, our region and our world.

# Weekly Mornings On

For complete and up-to-date program listings visit [www.soptv.org](http://www.soptv.org)



Channel		SUNDAY	MONDAY	TUESDAY	WEDNESDAY	THURSDAY	FRIDAY	SATURDAY
6:00	SOPTV PBS 8	Peg + Cat			BBC World News			Sid/Science Kid
	World 8.2	America Reframed	Finding Your Roots		Programming Varies – For Complete Listings, Visit <a href="http://soptv.org/schedules">soptv.org/schedules</a>			
	Create 8.3	Destination Craft	Dream of Italy	Fringe Benefits	Destination Craft	Fringe Benefits	Dream of Italy	Weekend Marathon
6:30	SOPTV PBS 8	Super Why!			Priscilla's Yoga Stretches			
	World 8.2	Amer. Reframed (cont.)	Finding Roots (cont.)		Programming Varies – For Complete Listings, Visit <a href="http://soptv.org/schedules">soptv.org/schedules</a>			
	Create 8.3	Journeys in Japan	Travelscope	Travel Programs Vary	Journeys in India	Travel Programs Vary	Travelscope	Weekend Marathon
7:00	SOPTV PBS 8	Mister Rogers			Nature Cat			
	World 8.2	Programming Varies			Democracy Now!			
	Create 8.3	Ask This Old House	This Old House	Woodwright's Shop	Ask This Old House	Woodwright's Shop	This Old House	Weekend Marathon
7:30	SOPTV PBS 8	Arthur			Curious George			
	World 8.2	Programming Varies			Democracy Now! (cont.)			
	Create 8.3	American Woodshop	Rough Cut Woodworking	Woodsmith Shop	American Woodshop	Woodsmith Shop	Rough Cut Woodworking	Weekend Marathon
8:00	SOPTV PBS 8	Thomas & Friends			Curious George			
	World 8.2	Between the Lines			Programming Varies – For Complete Listings, Visit <a href="http://soptv.org">soptv.org</a>			
	Create 8.3	Garden Smart	Smith's Garden Home	Growing Greener World	Garden Smart	Growing Greener World	Smith's Garden Home	Weekend Marathon
8:30	SOPTV PBS 8	Bob the Builder			Daniel Tiger's Neighborhood			
	World 8.2	Well Read			Programming Varies – For Complete Listings, Visit <a href="http://soptv.org">soptv.org</a>			
	Create 8.3	For Your Home	Beads, Baubles & Jewels	Baby Makes 3	Craft in America	Baby Makes 3	Craft Programs Vary	Weekend Marathon
9:00	SOPTV PBS 8	Special Presentation			Daniel Tiger's Neighborhood			
	World 8.2	Articulate w/ Jim Cotter			Tavis Smiley			
	Create 8.3	Weekend Marathon	Quilting Arts	Sewing with Nancy	Craft in Amer. (cont.)	It's Sew Easy	Fresh Quilting	Smith's Garden Home

9:30	SOP TV PBS 8	Special Presentation	Splash & Bubbles				Biz Kid\$
	World 8.2	Programming Varies	Tavis Smiley				Programming Varies
	Create 8.3	Weekend Marathon	Paint This	Best of Joy of Painting	Wyland's Art Studio	Best of Joy of Painting	Paint This
10:00	SOP TV PBS 8	Special Presentation	Splash & Bubbles				Garden Smart
	World 8.2	Programming Varies	Overheard: Evan Smith	Global 3000	To the Contrary	Scully/The World Show	Well Read
	Create 8.3	Weekend Marathon	Project Smoke	Chef Besh's New Orleans	On the Road: Vic Rallo	Chef Besh's New Orleans	Project Smoke
10:30	SOP TV PBS 8	Special Presentation	Sesame Street				Smith's Garden Home
	World 8.2	Start Up	Open Mind	Focus on Europe	American Forum	Second Opinion	Closer to Truth
	Create 8.3	Weekend Marathon	BBQ with Franklin	J. Weir's Cooking	Ciao Italia	J. Weir's Cooking	BBQ with Franklin
11:00	SOP TV PBS 8	Special Presentation	Thomas & Friends				Sewing with Nancy
	World 8.2	To the Contrary	Nature	Programming Varies	America Reframed	Programming Varies	NOVA
	Create 8.3	Weekend Marathon	Ellie's Real Good Food	Dining with the Chef	Smith's Garden to Table	Seafood Cook-off	Ellie's Real Good Food
11:30	SOP TV PBS 8	Special Presentation	Sit & Be Fit				Quilting Arts
	World 8.2	Washington Week	Nature (cont.)	Programming Varies	Amer. Reframed (cont.)	Programming Varies	NOVA (cont.)
	Create 8.3	Weekend Marathon	Sara's Wknight Meals	Nick Stellino Cooking	Mexico — One Plate	Nick Stellino Cooking	Sara's Wknight Meals



### Durrells in Corfu Season 2 Marathon

Keeley Hawes stars as a plucky widowed mother in the adventures of an eccentric English family on a Greek isle in the 1930s. The bohemian Durrells fit right in with the light-hearted Greeks — except when they disastrously don't.

**Thursday, November 23, 12:30 pm – 6:30 pm**



### Journey to the Macy's Parade

Get an exclusive look at what it takes to be part of one of the largest events of the year. Thousands of parade participants take to the streets of Manhattan to trek 2 miles in front of 3 million spectators and 50 million television viewers.

**Thursday, November 23 at 3 pm**



## WEEKEND MARATHONS

**Nov 4 & 5 ..... Bare Feet in NYC**

**Nov 11 & 12 ..... Craft in America**

**Nov 18 & 19\* ..... Thank-ful**

**Nov 25 & 26 ..... Soup-er Weekend**

*\*Repeats on Thanksgiving Day, Nov. 23rd @ 9 am*

# Weekly Afternoons On

For complete and up-to-date program listings visit [www.soptv.org](http://www.soptv.org)



Channel		SUNDAY	MONDAY	TUESDAY	WEDNESDAY	THURSDAY	FRIDAY	SATURDAY
12:00	SOP TV PBS 8	Great Performances	Jerry Yarnell Fine Art	Grand View	Best of Joy of Painting	Painting & Travel	Paint This	Fons & Porter's Quilting
	World 8.2	American Forum	Finding Your Roots		Programming Varies – For Complete Listings, Visit <a href="http://soptv.org/schedules">soptv.org/schedules</a>			
	Create 8.3	Weekend Marathon	Dream of Italy	Fringe Benefits	Destination Craft	Fringe Benefits	Dream of Italy	Pati's Mexican Table
12:30	SOP TV PBS 8	Gr. Performances (cont.)	My Greek Table	Jazzy Vegetarian	Sara's Wknight Meals	Moveable Feast	Family Ingredients	Fit 2 Stitch
	World 8.2	Open Mind	Finding Roots (cont.)		Programming Varies – For Complete Listings, Visit <a href="http://soptv.org/schedules">soptv.org/schedules</a>			
	Create 8.3	Weekend Marathon	Travelscope	Travel Programs Vary	Journeys in India	Travel Programs Vary	Travelscope	This Old House
1:00	SOP TV PBS 8	Programming Varies		Charlie Rose				Ellie's Real Good Food
	World 8.2	Focus on Europe	Programming Varies	Local USA		Programming Varies – For Complete Listings, Visit <a href="http://soptv.org/schedules">soptv.org/schedules</a>		
	Create 8.3	Weekend Marathon		Rick Steves' Europe				Travel Programs Vary
1:30	SOP TV PBS 8	Programming Varies		Charlie Rose (cont.)				America's Test Kitchen
	World 8.2	Global 3000	Programming Varies	Stories from the Stage	Programming Varies – For Complete Listings, Visit <a href="http://soptv.org/schedules">soptv.org/schedules</a>			
	Create 8.3	Weekend Marathon	Rough Cut Woodworking	Woodsmith Shop	American Woodshop	Woodsmith Shop	Rough Cut Woodworking	Travel Programs Vary
2:00	SOP TV PBS 8	Programming Varies		Nature Cat				Pati's Mexican Table
	World 8.2	America Reframed		NHK Newsline				To the Contrary
	Create 8.3	Weekend Marathon	Smith's Garden Home	Growing Greener World	Garden Smart	Growing Greener World	Garden Home	Lidia's Kitchen
2:30	SOP TV PBS 8	Programming Varies		Bob the Builder				Milk Street Television
	World 8.2	Amer. Reframed (cont.)		DW News				Washington Week
	Create 8.3	Weekend Marathon	Beads, Baubles & Jewels	Baby Makes 3	Craft in America	Baby Makes 3	Craft Programs Vary	Cook's Country
3:00	SOP TV PBS 8	Programming Varies		Cat in the Hat Knows a Lot About That!				Motorweek
	World 8.2	Programming Varies	Local USA		Programming Varies – For Complete Listings, Visit <a href="http://soptv.org/schedules">soptv.org/schedules</a>			American Forum
	Create 8.3	Ask This Old House	This Old House	Woodwright's Shop	Craft in Amer. (cont.)	Woodwright's Shop	This Old House	Weekend Marathon



3:30	SOPTV PBS 8	Programming Varies	Martha Speaks		Woodwright's Shop
	World 8.2	Programming Varies	Stories from the Stage	Programming Varies – For Complete Listings, Visit <a href="http://soptv.org/schedules">soptv.org/schedules</a>	Charlie Rose: Week
	Create 8.3		Pati's Mexican Table		
4:00	SOPTV PBS 8	To the Contrary	Ready Jet Go!		
	World 8.2	American War Stories	Programming Varies – For Complete Listings, Visit <a href="http://soptv.org">soptv.org</a>	NOVA	Vietnam War
	Create 8.3	Nick Stellino: Storyteller	Simply Ming	Cooking Programs Vary	Julie Taboulie's Kitchen
4:30	SOPTV PBS 8	Immense Possibilities	Odd Squad		
	World 8.2	Amer. War Stories (cont.)	Programming Varies – For Complete Listings, Visit <a href="http://soptv.org">soptv.org</a>	NOVA (cont.)	Vietnam War (cont.)
	Create 8.3	J. Pepin: Fast Food	Cooking Programs Vary	Baking with Julia	Hubert Keller
5:00	SOPTV PBS 8	BBC Newsnight	Odd Squad		
	World 8.2	Nature	Programming Varies	America Reframed	Programming Varies
	Create 8.3	Martha Bakes	Lidia's Kitchen	Martha Bakes	Lidia's Kitchen
5:30	SOPTV PBS 8	PBS NewsHour Weekend	Wild Kratts		
	World 8.2	Nature (cont.)	Programming Varies	Amer. Reframed (cont.)	Programming Varies
	Create 8.3	America's Test Kitchen	Cook's Country	America's Test Kitchen	Cook's Country
6:00	SOPTV PBS 8	Oregon Art Beat	This Old House	Ask This Old House	Immense Possibilities
	World 8.2	Finding Your Roots	Local USA	Programming Varies	Frontline
	Create 8.3	M. Colemecco's Real Food	Taste the Islands	M. Colemecco's Real Food	Taste the Islands
6:30	SOPTV PBS 8	Oregon Field Guide	Nightly Business Report		
	World 8.2	Finding Roots (cont.)	Stories from the Stage	Programming Varies	Frontline (cont.)
	Create 8.3		Pati's Mexican Table		
7:00	SOPTV PBS 8	Home Fires on M'piece	PBS NewsHour		
	World 8.2	Programming Varies	Tavis Smiley		
	Create 8.3	Ask This Old House	This Old House	Woodwright's Shop	Ask This Old House

For full listings of special presentations see pages 18-27 – or go to [soptv.org](http://soptv.org)

# Primetime 3-Channel Schedule



## NOVA: Killer Hurricanes

The Great Hurricane of 1780 took nine days to blast its way across the Caribbean, killing at least 20,000—the highest known death toll of any single weather event in history. What made this superstorm so deadly? NOVA tracks down clues in eyewitness chronicles, old ruins, and computer simulations.

**Wednesday, November 1 at 9 pm**



## Thin Ice: The Inside Story of Climate Science

Filmmaker Simon Lamb interviews scientists who discuss their research work on the physics of greenhouse gases, how average world temperatures are determined, and how regular patterns of warming and cooling are correlated with carbon dioxide and other greenhouse gases.

**Sunday, November 5 at 9 pm**

	Channel	7:30 pm	8:00 pm	8:30 pm	9:00 pm
WEDNESDAY <b>1</b>	SOPTV PBS 8	◀ PBS NewsHour	Nature: Giraffes – Africa's Gentle Giants		NOVA: Killer...
	World 8.2	Tavis Smiley	BBC World News	Focus on Europe	Charlie...
	Create 8.3	Rick Steves' Europe	Born to Explore	Lidia's Kitchen	Cook's Country
THURSDAY <b>2</b>	SOPTV PBS 8	◀ PBS NewsHour	Oregon Art Beat	Oregon Field Guide	Midsomer...
	World 8.2	Tavis Smiley	BBC World News	Scully/World Show	Charlie...
	Create 8.3	Travelscope	Two for the Road	Martha Bakes	America's Test Kitchen
FRIDAY <b>3</b>	SOPTV PBS 8	◀ PBS NewsHour	Doc Martin: Mother Knows Best		Shetland...
	World 8.2	Tavis Smiley	BBC World News	Washington Week	Charlie...
	Create 8.3	Chesapeake Bay by Air		Lidia's Kitchen	Cook's Country
SATURDAY <b>4</b>	SOPTV PBS 8	Rick Steves' Europe	Globe Trekker: Hawaii		800 Words...
	World 8.2	◀ America Reframed: Vegas Baby	The Committee		Edgar Allan Poe...
	Create 8.3	Bare Feet in NYC	Bare Feet in NYC	Bare Feet in NYC	America's Test Kitchen
SUNDAY <b>5</b>	SOPTV PBS 8	◀ Home Fires, Ep. 2	The Durrells in Corfu Season 2		Poldark Season 3...
	World 8.2	◀ Choctaw Code...	Yanks Fight the Kaiser		Thin Ice: Inside Story...
	Create 8.3	Rick Steves' Europe	Born to Explore	Martha Bakes	America's Test Kitchen
MONDAY <b>6</b>	SOPTV PBS 8	◀ PBS NewsHour	Antiques Roadshow: Our 50 States 2		My Story of Service
	World 8.2	Tavis Smiley	BBC World News	To the Contrary	Charlie...
	Create 8.3	Real Rail Adventures: Switzerland		Lidia's Kitchen	Cook's Country
TUESDAY <b>7</b>	SOPTV PBS 8	◀ PBS NewsHour	Finding Your Roots: Black Like Me		Vietnam War...
	World 8.2	Tavis Smiley	BBC World News	Global 3000	Charlie...
	Create 8.3	Travelscope	Two for the Road	Martha Bakes	America's Test Kitchen

# Ashland's Shop'n Kart

OPEN 7 AM – Midnight

**7 DAYS A WEEK**

24-hr.  
ATM

2268 Ashland Street (next to Bi-Mart)

541-488-1579



**Independently owned for over 23 years,  
we carry more than 43,000 products –  
“conventional,” natural & organic**

Over 14,000 organic & natural foods • Large bulk foods section  
Extensive vitamins & supplements • 90 fresh produce items daily!

**Visit our website for coupons and more information  
[www.ashlandshopnkart.com](http://www.ashlandshopnkart.com)**

**SOPTV@create**

## America's Test Kitchen

New hosts Bridget Lancaster and Julia Collin Davison lead a team of test cooks as they deconstruct recipes and reveal the test kitchen's secrets to foolproof cooking at home. Master such dishes as grilled pizza, baked Alaska, chicken and sausage gumbo, and more.

**Tues., Thurs., Sat. & Sun., at 9 & 11:30 pm**



**9:30 pm**

**10:00 pm**

**10:30 pm**

**11:00 pm**

**11:30 pm**

... Hurricanes	Frontline: Putin's Revenge, Part 2		Doctor Fix: A New Era of Modern Medicine	
... Rose	Democracy Now!		Frontline: Putin's Revenge, Part 1	
Real Food	Jacques Pepin	Travels with Darley	Lidia's Kitchen	Cook's Country
... Murders: Death & Dust, Pt. 1 & 2	Sherlock Season 4 on Masterpiece: The Lying Detective			
... Rose	Democracy Now!		Secrets of the Dead: Leonardo	
New Orleans Cooking	Chef John Besh	Travels to the Edge	Martha Bakes	America's Test Kitchen
... Shetland (cont.)	Poldark on Masterpiece, Season 3, Ep. 5			
... Rose	Democracy Now!		Remembering Vietnam: Telling Project	
Simply Ming	Project Smoke	Curious Traveler	Lidia's Kitchen	Cook's Country
... 800 Words (cont.)	Silent Witness: Commodity, Part 1 & 2			
... American Masters	Plainspirits		America Reframed: Vegas Baby	
Growing Greener Wld.	Chef John Besh	Travels to the Edge	Lidia's Kitchen	America's Test Kitchen
... Ep. 6 (cont.)	Collection on Masterpiece		Last Tango in Halifax	
... of Climate Change	Finding Your Roots: Immigrant Nation		Choctaw Code Talkers	
Nick Stellino	Jacques Pepin	Travels with Darley	Martha Bakes	America's Test Kitchen
Immense Possibilities	Antiques Roadshow: Survivors		Independent Lens: Chasing Trane	
... Rose	Democracy Now!		Local USA	Stories from the Stage
Simply Ming	Project Smoke	Curious Traveler	Lidia's Kitchen	Cook's Country
... The Veneer of Civilization (cont.)			Local Focus: Vietnam	Metal Road
... Rose	Democracy Now!		Roadtrip Nation: The Next Mission	
New Orleans Cooking	Chef John Besh	Travels to the Edge	Martha Bakes	America's Test Kitchen

# Primetime 3-Channel Schedule



## Nature: The Cheetah Children

Life on the African plains is a constant struggle, but for a single mother rearing her offspring, the odds seem to be stacked against them. This is an inspiring tale about motherhood and family, as we follow a cheetah family on the grasslands through the eyes of conservationist and cameraman Kim Wolhuter.

**Wednesday, November 8 at 8 pm**



## Debt of Honor: Disabled Veterans

Featuring interviews with some of the country's most prominent disabled veterans, this film takes an unflinching look at the reality of warfare, disability, and the challenges disabled veterans have faced throughout history and continue to face, from the Revolutionary War through today's conflicts in the Middle East.

**Saturday, November 11 at 8 pm**

	Channel	7:30 pm	8:00 pm	8:30 pm	9:00 pm
WEDNESDAY <b>8</b>	SOPTV PBS 8	◀ PBS NewsHour	Nature: The Cheetah Children		NOVA...
	World 8.2	Tavis Smiley	BBC World News	Focus on Europe	Charlie...
	Create 8.3	Rick Steves' Europe	Born to Explore	Lidia's Kitchen	Cook's Country
THURSDAY <b>9</b>	SOPTV PBS 8	◀ PBS NewsHour	Oregon Art Beat	Oregon Field Guide	Midsomer...
	World 8.2	Tavis Smiley	BBC World News	Scully/World Show	Charlie...
	Create 8.3	Travelscope	Two for the Road	Martha Bakes	America's Test Kitchen
FRIDAY <b>10</b>	SOPTV PBS 8	◀ PBS NewsHour	Doc Martin: Remember Me		Shetland...
	World 8.2	Tavis Smiley	BBC World News	Washington Week	Charlie...
	Create 8.3	Rick Steves Special		Lidia's Kitchen	Cook's Country
SATURDAY <b>11</b>	SOPTV PBS 8	Rick Steves' Europe	Globe Trekker Food Hour: Provence, France		800 Words...
	World 8.2	◀ America Refr.	Debt of Honor: Disabled Veterans		Ice Warriors...
	Create 8.3	◀ Craft in America	Craft in America		America's Test Kitchen
SUNDAY <b>12</b>	SOPTV PBS 8	◀ Home Fires, Ep. 3	The Durrells in Corfu, Season 2		Poldark Season 3...
	World 8.2	◀ Service	War Zone/Comfort Zone		Nature...
	Create 8.3	Rick Steves' Europe	Born to Explore	Martha Bakes	America's Test Kitchen
MONDAY <b>13</b>	SOPTV PBS 8	◀ PBS NewsHour	Antiques Roadshow: Junk in the Trunk 7		My Story of Service
	World 8.2	Tavis Smiley	BBC World News	To the Contrary	Charlie...
	Create 8.3	Rick Steves Special		Lidia's Kitchen	Cook's Country
TUESDAY <b>14</b>	SOPTV PBS 8	◀ PBS NewsHour	Finding... Roots: Children of the Revolution		Vietnam War...
	World 8.2	Tavis Smiley	BBC World News	Global 3000	Charlie...
	Create 8.3	Travelscope	Weekends w/Yankee	Martha Bakes	America's Test Kitchen



## PROGRAMS

**Children's Festival, Story Time,  
Pass the Book, Book Walk  
Winter Puppet Show**



**Dial-A-Story 541-774-6439**

**Learn More at [storytellingguild.org](http://storytellingguild.org) & [Facebook.com/storytellingguild](https://www.facebook.com/storytellingguild)**

## SOPTV@create

### On the Road with Vic Rallo: Italy

Celebrate Italy's authentic food, people, history, wine, and culture — from the Alps to the southern shores of Sicily. Host Vic Rallo, a New Jersey restaurateur, Italian wine expert, and raconteur, explores everything that makes Italy extraordinary and shares information about Italian ingredients, techniques, and history.

**Sunday & Wednesday at 10 pm, starting Nov. 12**



**9:30 pm**

**10:00 pm**

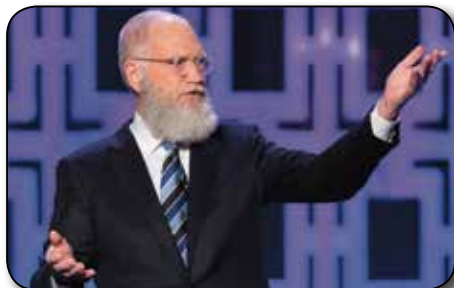
**10:30 pm**

**11:00 pm**

**11:30 pm**

... Killer Floods	Frontline: Business of Disaster		Journey Home to the <i>USS Arizona</i>	
... Rose	Democracy Now!		When I'm 65	
Nick Stellino	Jacques Pepin	Travels with Darley	Lidia's Kitchen	Cook's Country
... Murders: Picture of Innocence, Pt. 1 & 2	Sherlock Season 4 on Masterpiece: The Final Problem			
... Rose	Democracy Now!		Long Road Home	
New Orleans Cooking	Chef John Besh	Travels to the Edge	Martha Bakes	America's Test Kitchen
... Shetland (cont.)	Poldark on Masterpiece, Season 3, Ep. 6			
... Rose	Democracy Now!		Beyond the Divide	
Simply Ming	Project Smoke	Curious Traveler	Lidia's Kitchen	Cook's Country
... 800 Words (cont.)	Silent Witness Coup de Grace, Pt. 1 & 2			
... USA Sled Hockey	Lest We Forget		America Reframed: On a Knife Edge	
Growing Greener Wrld.	Chef John Besh	Travels to the Edge	Lidia's Kitchen	America's Test Kitchen
... Ep. 7 (cont.)	Collection On Masterpiece		Mercy Street: The New Nurse	
... Cheetah Children	Finding Your Roots: Black Like Me		Service: When Women Come Marching Home	
Nick Stellino	On the Road	Travels with Darley	Martha Bakes	America's Test Kitchen
Immense Possibilities	Antiques Roadshow: Junk in the Trunk 3		POV: Almost Sunrise	
... Rose	Democracy Now!		Local USA	Stories from the Stage
Simply Ming	Project Smoke	Curious Traveler	Lidia's Kitchen	Cook's Country
... The History of the World	On Two Fronts: Latinos & Vietnam			
... Rose	Democracy Now!		Urban Rez	
New Orleans Cooking	Chef John Besh	Travels to the Edge	Martha Bakes	America's Test Kitchen

# Primetime 3-Channel Schedule



## David Letterman: The Mark Twain Prize

Celebrate beloved broadcaster David Letterman, the 20th recipient of The Kennedy Center Mark Twain Prize for American Humor. From the stage of The John F. Kennedy Center, a star-studded lineup salutes the achievements of the comedic trailblazer.

**Monday, November 20 at 10 pm**



## Tending the Wild

Explore how indigenous people in California have actively shaped and tended the land for millennia, in the process developing a deep understanding of plant and animal life. This documentary examines how humans can live in balance with nature and how traditional practices can inspire a new generation.

**Sunday, November 19 at 9 pm**

	Channel	7:30 pm	8:00 pm	8:30 pm	9:00 pm
WEDNESDAY 15	SOPTV PBS 8	◀ PBS NewsHour	Year in Space		The Farthest...
	World 8.2	Tavis Smiley	BBC World News	Focus on Europe	Charlie...
	Create 8.3	Rick Steves' Europe	Born to Explore	Lidia's Kitchen	Cook's Country
THURSDAY 16	SOPTV PBS 8	◀ PBS NewsHour	Oregon Art Beat	Oregon Field Guide	Midsomer...
	World 8.2	Tavis Smiley	BBC World News	Scully/World Show	Charlie...
	Create 8.3	Travelscope	Weekends w/Yankee	Martha Bakes	America's Test Kitchen
FRIDAY 17	SOPTV PBS 8	◀ PBS NewsHour	Doc Martin: Don't Let Go		Shetland...
	World 8.2	Tavis Smiley	BBC World News	Washington Week	Charlie...
	Create 8.3	Rudy Maxa's World		Lidia's Kitchen	Cook's Country
SATURDAY 18	SOPTV PBS 8	Rick Steves' Europe	Globe Trekker Tough Boats: The Nile, Egypt		800 Words...
	World 8.2	◀ America Reframed: The Last Season	Lest We Forget		Mystic Voices: Story...
	Create 8.3	Garden to Table	Martha Bakes	America's Test Kitchen	America's Test Kitchen
SUNDAY 19	SOPTV PBS 8	◀ Home Fires, Ep. 4	The Durrells in Corfu, Season 2		Poldark Season 3...
	World 8.2	◀ LaDonna Harris	Rising Voices/Hothaninpi		Tending...
	Create 8.3	Rick Steves' Europe	Born to Explore	Martha Bakes	America's Test Kitchen
MONDAY 20	SOPTV PBS 8	◀ PBS NewsHour	Antiques Roadshow: Greatest Gifts		My Story...
	World 8.2	Tavis Smiley	BBC World News	To the Contrary	Charlie...
	Create 8.3	Rudy Maxa's World		Lidia's Kitchen	Cook's Country
TUESDAY 21	SOPTV PBS 8	◀ PBS NewsHour	Finding Your Roots		Vietnam War...
	World 8.2	Tavis Smiley	BBC World News	Global 3000	Charlie...
	Create 8.3	Travelscope	Weekends w/Yankee	Martha Bakes	America's Test Kitchen



**Watch Full Episodes  
Online...  
Anytime  
Anywhere**

**Local & National  
Programs**

**video.soptv.org**

## SOPTV@create

### Julie Taboulie's Lebanese Kitchen

Chef and Lebanese-American Julie Taboulie celebrates the colorful and flavorful cuisine of Lebanon. Julie shares her authentic array of original Lebanese recipes — tabbouleh, lamb kebab, and Lebanese-style French fries — that have been handed down in her family for over three generations.

**Tuesday & Thursday at 9:30 pm**



**9:30 pm**

**10:00 pm**

**10:30 pm**

**11:00 pm**

**11:30 pm**

... Voyager in Space (cont.)			Makers: Women in Space	
... Rose	Democracy Now!		Frontline	
Nick Stellino	On the Road	Travels with Darley	Lidia's Kitchen	Cook's Country
... Murders: They Seek Him Here, Pt. 1 & 2		Lake of Betrayal		
... Rose	Democracy Now!		Red Power Energy	
Julie Taboulie	Chef John Besh	Travels to the Edge	Martha Bakes	America's Test Kitchen
... Shetland (cont.)			Poldark on Masterpiece, Season 3, Ep. 7	
... Rose	Democracy Now!		They Were Our Fathers	
Simply Ming	Project Smoke	Curious Traveler	Lidia's Kitchen	Cook's Country
... 800 Words (cont.)			Silent Witness: In a Lonely Place, Pt. 1 & 2	
... of Pequot War, Pt. 1	Mystic Voices: Story of the Pequot War, Pt. 2		America Reframed: The Last Season	
Growing Greener Wrld.	Chef John Besh	Travels to the Edge	Lidia's Kitchen	America's Test Kitchen
... Ep.8 (cont.)		Collection on Masterpiece		Mercy Street: The Haversack
... the Wild	Finding Your Roots: Children of the Revolution		LaDonna Harris: Indian 101	
Nick Stellino	On the Road	Travels with Darley	Martha Bakes	America's Test Kitchen
... of Service			David Letterman: The Mark Twain Prize	
... Rose	Democracy Now!		Local USA	Stories from the Stage
Simply Ming	Project Smoke	Curious Traveler	Lidia's Kitchen	Cook's Country
... A Disrespectful Loyalty			Local Focus: Conversation About Vietnam War	
... Rose	Democracy Now!		Rising Voices/Hothaninpi	
Julie Taboulie	Chef John Besh	Travels to the Edge	Martha Bakes	America's Test Kitchen

# Primetime 3-Channel Schedule



## Nell Robinson & Jim Nunally Band: A Music Gone Public Special

Nell Robinson and Jim Nunally perform original tunes and country classics at the legendary Sierra Nevada Brewery concert hall. Nunally (guitarist for David Grisman's Bluegrass Experience), Pete Grant (pedal Steel, formerly with Jerry Garcia), and Jim Kerwin (acoustic bass, formerly with both Grisman and Garcia) join jazz drummer Jon Arkin to add slick picking to the harmonies provided by Robinson.

**Thursday, November 23 at 11 pm**



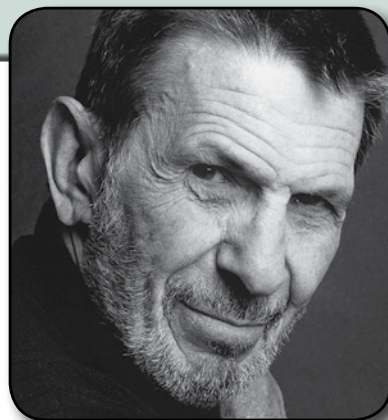
	Channel	7:30 pm	8:00 pm	8:30 pm	9:00 pm
WEDNESDAY <b>22</b>	SOPTV PBS 8	◀ PBS NewsHour	Nature: Nature's Miniature Miracles		NOVA: Extreme...
	World 8.2	Tavis Smiley	BBC World News	Focus on Europe	Charlie...
	Create 8.3	Rick Steves' Europe	Born to Explore	Lidia's Kitchen	Cook's Country
THURSDAY <b>23</b>	SOPTV PBS 8	◀ PBS NewsHour	Songbook Standards: As Time Goes By...		
	World 8.2	Tavis Smiley	BBC World News	Scully/World Show	Charlie...
	Create 8.3	Travelscope	Weekends w/Yankee	Martha Bakes	America's Test Kitchen
FRIDAY <b>24</b>	SOPTV PBS 8	◀ PBS NewsHour	Doc Martin: Cats & Sharks		Agatha Christie's...
	World 8.2	Tavis Smiley	BBC World News	Washington Week	Charlie...
	Create 8.3	Real Rail Adventures: Swiss Grand Tour		Lidia's Kitchen	Cook's Country
SATURDAY <b>25</b>	SOPTV PBS 8	◀ R. Steves' Special	The Beatles: Eight Days A Week ...		
	World 8.2	◀ America Refr.	Our Fires Still Burn		Johnny Cash's...
	Create 8.3	Nick Stellino	Jacques Pepin	Nick Stellino	America's Test Kitchen
SUNDAY <b>26</b>	SOPTV PBS 8	◀ OR Revealed	Anne of Green Gables (2016)...		
	World 8.2	◀ Forgotten War	Sand Creek Massacre		Nature: Nature's...
	Create 8.3	Rick Steves' Europe	Born to Explore	Martha Bakes	America's Test Kitchen
MONDAY <b>27</b>	SOPTV PBS 8	◀ PBS NewsHour	The '80s...		
	World 8.2	Tavis Smiley	BBC World News	To the Contrary	Charlie...
	Create 8.3	Over Hawai'i		Lidia's Kitchen	Cook's Country
TUESDAY <b>28</b>	SOPTV PBS 8	◀ PBS NewsHour	Vietnam War: The Weight...		
	World 8.2	Tavis Smiley	BBC World News	Global 3000	Charlie...
	Create 8.3	Travelscope	Weekends w/Yankee	Martha Bakes	America's Test Kitchen
WEDNESDAY <b>29</b>	SOPTV PBS 8	◀ PBS NewsHour	Beyond a Year in Space		
	World 8.2	Tavis Smiley	BBC World News	Focus on Europe	Charlie...
	Create 8.3	Rick Steves' Europe	Born to Explore	Lidia's Kitchen	Cook's Country
THURSDAY <b>30</b>	SOPTV PBS 8	◀ PBS NewsHour	Oregon Revealed: An Oregon Field Guide Special		
	World 8.2	Tavis Smiley	BBC World News	Scully/World Show	Charlie...
	Create 8.3	Travelscope	Weekends w/Yankee	Martha Bakes	America's Test Kitchen



## Remembering Leonard Nimoy

Take an intimate journey into the personal life of Leonard Nimoy, a prolific actor and director who is best known for playing Spock in the *Star Trek* franchise. The documentary features stories from his childhood growing up in Boston in the 1930s and 1940s, an overview of his early career in Hollywood, and a snapshot of his big break-out role on the popular sci-fi series. During the last years of Nimoy's life, he helped raise awareness about COPD.

**Saturday, November 25 at 6 & 10 pm**


**9:30 pm**
**10:00 pm**
**10:30 pm**
**11:00 pm**
**11:30 pm**

... Animal Weapons	Frontline: Poor Kids		This Is the House That Jack Built	
... Rose	Democracy Now!		Open Sesame: The Story of Seeds	
Nick Stellino	On the Road	Travels with Darley	Lidia's Kitchen	Cook's Country
... Songbook (cont.)	Candy Bomber		Nell Robinson & Jim Nunally Band	
... Rose	Democracy Now!		Medicine Woman	
Julie Taboulie	Chef John Besh	Travels to the Edge	Martha Bakes	America's Test Kitchen
... The Witness for the Prosecution			Poldark on M'piece, Season 3, Ep. 8	
... Rose	Democracy Now!		Nothing Left to Lose	
Simply Ming	Project Smoke	Curious Traveler	Lidia's Kitchen	Cook's Country
... The Touring Years (cont.)	Sgt. Pepper's Musical Revolution			
... Bitter Tears	Remembering Leonard Nimoy		America Reframed: We Breathe Again	
Growing Greener Wrld.	Chef John Besh	Travels to the Edge	Lidia's Kitchen	America's Test Kitchen
... Anne (cont.)	Victoria Returns	Carole King – James Taylor: Live at the Troubadour		
... Miniature Miracles	Finding Your Roots		Forgotten War: Struggle for N. America	
Nick Stellino	On the Road	Travels with Darley	Martha Bakes	America's Test Kitchen
... The '80s (cont.)	Suze Orman's Financial Solutions for You			
... Rose	Democracy Now!		Local USA	
Simply Ming	Project Smoke	Curious Traveler	Lidia's Kitchen	Cook's Country
... of Memory	Reflections on the Vietnam War			Victoria Returns
... Rose	Democracy Now!		Sousa on the Rez	Injunuity
Julie Taboulie	Chef John Besh	Travels to the Edge	Martha Bakes	America's Test Kitchen
How Not to Die with Michael Greger, MD			Candy Bomber	
... Rose	Democracy Now!		Frontline: Poor Kids	
Nick Stellino	On the Road	Travels with Darley	Lidia's Kitchen	Cook's Country
Oregon Revealed 2: Coastal Wonders			'60s Pop, Rock & Soul	
... Rose	Democracy Now!		Changing Seas	Changing Seas
Julie Taboulie	Chef John Besh	Travels to the Edge	Martha Bakes	America's Test Kitchen

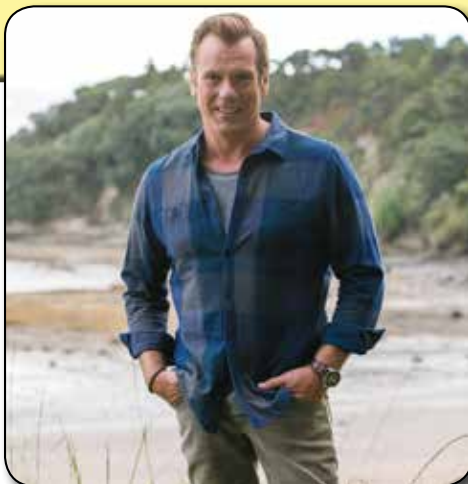
# Select SOPTV-PBS Program Descriptions



## 800 Words – Season 2

Recently widowed Sydney newspaper columnist George Turner continues working on a fresh start with his teenage children in the tiny New Zealand town where he vacationed as a child. Season 1 saw the Turners struggling to fit in. Though they've become more accepted by the locals, in Season 2, there are still plenty of problems for George to face, including finding a real job and, potentially, new love.

**Saturday at 9 pm, starting November 4**



## November 1 / Wednesday

PM

### 8:00 Nature: Giraffes – Africa's Gentle Giants

A man, his family, and a band of helpers attempt to relocate a herd of wild giraffes in Africa.

### 9:00 NOVA: Killer Hurricanes

The Great Hurricane of 1780 that killed more people than any other Caribbean hurricane is explored.

### 10:00 Frontline: Putin's Revenge, Part 2

How the U.S. struggled to confront Vladimir Putin over Russian involvement in the 2016 election.

### 11:00 Doctor Fix: A New Era of Modern Medicine

America's evolving healthcare system is explored, and patients, doctors, and experts are interviewed.

## November 2 / Thursday

PM

### 8:00 Oregon Art Beat: One Skill Informs Another

Andiel Brown is director of the gospel choirs and ensembles at University of Oregon in Eugene. Jessica Jackson Hutchins is a multimedia artist who uses everything from newspaper and ceramics to old t-shirts and scraps of metal to create sculptures that make people think. Willy Vlautin is an Oregon Book Award Winner.

### 8:30 Oregon Field Guide: Warner Canyon/Friends of Trees/Climate and Butterflies

Oregon's second oldest ski hill is little known outside of Lakeview, Oregon, but it's a small-town favorite run entirely by volunteers. Friends of Trees has spread from

a neighborhood cooperative to a regional tree-planting powerhouse. Sea-level rise is changing habitat for wildlife across the Pacific Northwest. One species that's already been affected? A rare butterfly only found on Puget Sound's San Juan Island.

### 9:00 Midsomer Murders:

#### Death and Dust, Pt. 1 & 2

Barnaby and Jones investigate the death a doctor who was killed by a hit-and-run driver.

### 10:40 Sherlock Season 4 on Masterpiece:

#### The Lying Detective

Sherlock faces a chilling enemy, the powerful and seemingly unassailable Culverton Smith.

## November 3 / Friday

PM

### 8:00 Doc Martin: Mother Knows Best

Louisa's mother arrives in Portwenn unexpectedly, and Louisa is far from happy about her arrival.

### 9:00 Shetland

When a young man disappears on a ferry crossing and a small boy ends up in intensive care, DI Jimmy Perez and his team become convinced the two events are connected.

### 10:00 Shetland

DI Perez grows convinced that Michael Maguire is implicated in the grisly death of a young man, discovered in a shipping container.

### 11:00 Poldark Season 3 on Masterpiece, Ep. 5

Frogs drive George to the breaking point, leading him to set a trap for Drake.

## November 4 / Saturday

PM

### 7:30 Rick Steves' Europe: The Czech Republic Off the Beaten Path

Take in a whirlwind of Art Nouveau, local pub music, cheese-tasting, river-rafting, and peat-bathing.

### 8:00 Globe Trekker: Hawaii

Zoe D'Amato sets out on a grand adventure to explore The Big Island, Maui, Oahu, and Kauai in Hawaii.

### 9:00 800 Words

George and Arlo implement a cunning plan to bring Shay back from Sydney.

### 10:00 Silent Witness: Commodity, Part 1

A footballer's reputation is under threat when a sex tape links him to the brutal murder of a woman.

### 10:55 Silent Witness: Commodity, Part 2

Doctor Nikki Alexander's feelings surface as pressure grows to find leads for two unsolved cases.

## November 5 / Sunday

AM

### 9:00 Bob Ross: The Happy Painter

Take a behind-the-scenes look at Ross's journey from humble beginnings to an American pop-culture icon.

### 10:30 Mannheim Steamroller 30/40 Live

Great songs from the Mannheim Steamroller Christmas annual tour include "Deck the Halls" and more.

PM

### 12:00 Great Performances:

#### Noel Coward's Present Laughter

A self-obsessed actor experiences a midlife crisis amidst crazed playwrights and unexpected twists.

### 2:30 Richard Linklater: American Masters

The independent filmmaking style of the director of *Boyhood* and *Dazed and Confused* is explored.

### 6:00 Oregon Art Beat: One Skill Informs Another

Please see Thursday, November 2 at 8 pm.

### 6:30 Oregon Field Guide: Warner Canyon/Friends of Trees/Climate and Butterflies

Please see Thursday, November 2 at 8:30 pm.

### 7:00 Home Fires on Masterpiece, Ep. 2

The Women's Institute is back and the RAF arrives in town. Alison's dog has a close call.

### 8:00 The Durrells in Corfu Season 2 on Masterpiece

Aunt Hermione arrives with a spiritualist who promises to get in touch with Louisa's dead husband.

### 9:00 Poldark Season 3 on Masterpiece, Ep. 6

Rev. Whitworth puts Morwenna through the tortures of the damned. Aunt Agatha and George cross swords.

### 10:00 Collection on Masterpiece

On a weekend at his partner's chateau, Paul expels unwelcome guests. Charlotte makes her move.

### 11:00 Last Tango in Halifax

Caroline gets to the heart of the reason Gillian is reluctant to go through with the wedding.

## November 6 / Monday

PM

### 8:00 Antiques Roadshow: Our 50 States 2

Travel across America and back in time with appraisals for a Joseph Henry Sharp oil and more.

### 9:00 My Story of Service: Jerry Heckers

Jerry Heckers of Grants Pass shares stories from his time serving in the U.S. Army during Vietnam. Tales include surviving an enemy ambush that lasted 3 days, struggles with PTSD, and how our country changed during his deployment.

### 9:30 Immense Possibilities: Dying Well

The maker of the documentary *Living While Dying* shares her stories of the final days of four men.

### 10:00 Antiques Roadshow: Survivors

A New Orleans chess table and more items that have endured dangerous circumstances are highlighted.

### 11:00 Independent Lens: Chasing Trane – The John Coltrane Documentary

The passions and experiences that shaped the life of jazz artist John Coltrane are highlighted.

## November 7 / Tuesday

PM

### 8:00 Finding Your Roots: Black Like Me

Bryant Gumbel, Tonya Lewis-Lee, and Suzanne Malveaux learn unexpected facts about their ancestry.

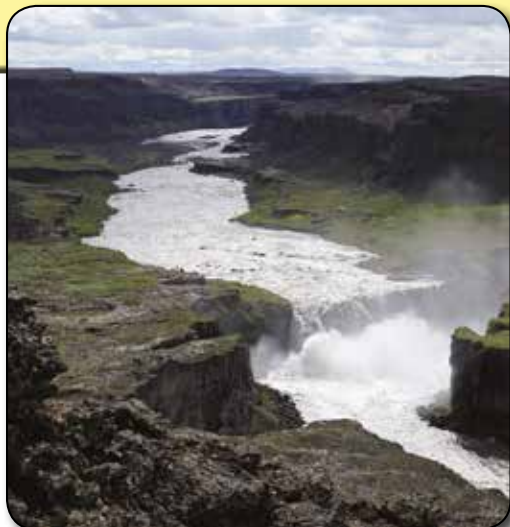
# Select SOPTV-PBS Program Descriptions



## **NOVA: Killer Floods**

All over the world, scientists are discovering traces of ancient floods on a scale that dwarfs even the most severe flood disasters of recent times. Over a vast expanse of Washington State called the Channeled Scablands, the level prairie gives way to bizarre, gargantuan rock formations: house-sized boulders seemingly dropped from the sky; a cliff carved by a waterfall twice the height of Niagara; and potholes resembling ones scoured out by rivers today, but bigger.

**Wednesday, November 8 at 9 pm**



### **9:00 Vietnam War: The Veneer of Civilization**

America is at odds over the war. Soldiers on all sides witness savagery and unflinching courage.

### **11:00 Local Focus: The Vietnam War**

Host Julie Akins interviews Ken Burns and Lynn Novick about making their mini-series, *The Vietnam War*.

### **11:30 Metal Road**

For decades, thousands of Navajos worked the railroads maintaining the transcontinental network.

## **November 8 / Wednesday**

PM

### **8:00 Nature: The Cheetah Children**

A wildlife cameraman shadows a cheetah family and details the cubs' remarkable journey to adulthood.

### **9:00 NOVA: Killer Floods**

Geologic fingerprints of colossal floods that violently reshaped the ancient world are uncovered.

### **10:00 Frontline: Business of Disaster**

An investigation into who profits when disaster strikes focuses on Superstorm Sandy.

### **11:00 Journey Home to the USS Arizona**

The family of Raymond Haerry Sr. place his ashes aboard the USS Arizona Memorial at Pearl Harbor.

## **November 9 / Thursday**

PM

### **8:00 Oregon Art Beat: A Passage to Oregon**

Shadow Machine: The Los Angeles animation house behind *BoJack*

*Horseman and Jeff and Some Aliens*

opens a new office in Portland to dive into the deep animation talent pool in the Northwest. Anton Pavlenko was well-known as a highly detailed, plein-air painter.

### **9:00 Midsomer Murders:**

#### **Picture of Innocence, Pt. 1 & 2**

Barnaby becomes a suspect when a photographer is murdered after exhibiting a picture of him.

### **10:40 Sherlock Season 4 on Masterpiece:**

#### **The Final Problem**

Long-buried secrets are revealed as Sherlock and Watson face their greatest challenge ever.

## **November 10 / Friday**

PM

### **8:00 Doc Martin: Remember Me**

Martin and Louisa's baby still doesn't have a name. P.C. Joe Penhale's ex-wife Maggie visits.

### **9:00 Shetland**

Perez and Tosh's investigation leads them to Glasgow, where they hope to uncover the truth behind Maguire's brutal death and his connection to Robbie Morton. But old ghosts return to haunt Perez, and with his enemies trying to prevent him from getting to the truth, the murder mystery continues.

### **10:00 Shetland**

Perez and his team are determined to track down the person who aided Michael Thompson's killer. But as the case gathers pace, the officers involved



find they are all under threat. Sandy comes across the killer by chance in a ruined building, and is knocked out. Tosh, returning from Glasgow, is abducted at the airport.

- 11:00 Poldark Season 3 on Masterpiece, Ep. 6**  
Rev. Whitworth puts Morwenna through the tortures of the damned. Aunt Agatha and George cross swords.

## November 11 / Saturday

PM

- 7:30 Rick Steves' Europe: Athens & Side Trips**  
Visit the Parthenon, Agora, the Isle of Hydra and take the fast-paced pulse of the modern city.
- 8:00 Globe Trekker Food Hour: Provence, France**  
Culinary writer Rosie Lovell explores the South of France's Cote D'Azur and its rustic cuisine.
- 9:00 800 Words**  
All of Weld comes out to bid farewell to Jan. George almost destroys his friendship with Woody.
- 10:00 Silent Witness: Coup de Grace, Part 1**  
Nikki Alexander delivers ground-breaking testimony in the appeal court case of a convicted killer.
- 10:55 Silent Witness: Coup de Grace, Part 2**  
Nikki's professional reputation is on the line due to her romantic involvement with a lawyer.

## November 12 / Sunday

AM

- 9:00 Candy Bomber**  
In 1948 American pilot Gail "Hal" Halvorsen delivered candy to children living in post-war Germany.
- 10:00 Ed Slott's Retirement Road Map 2017**  
Ed Slott, America's IRA Expert, shows you how to steer clear of the roadblocks in your retirement.

PM

- 12:00 Great Performances: In the Heights Chasing Broadway Dreams**  
Follows the cast and creative team from the musical's small start to its Tony Award-winning status.
- 1:00 Foo Fighters – Landmarks Live in Concert: A Great Performances Special**  
The rock band is captured in peak performance at the ancient amphitheater at Athens' Acropolis.

- 2:00 Carole King – James Taylor Live at the Troubadour**

Taylor and King celebrate the 50th anniversary of the Los Angeles club with a great set of songs.

- 6:00 Oregon Art Beat: A Passage to Oregon**  
Please see Thursday, November 9 at 8 pm.
- 7:00 Home Fires on Masterpiece, Ep. 3**  
Alison takes desperate steps to pay a bill. Pat makes a speech but pays the consequences.
- 8:00 The Durrells in Corfu Season 2 on Masterpiece**  
Vasilisa makes the least-romantic proposal in history, and Spiro and Hugh organize a cricket match.
- 9:00 Poldark Season 3 on Masterpiece, Ep. 7**  
George triumphs as the ground collapses under his relationship with Elizabeth.
- 10:00 Collection on Masterpiece**  
While Dominique is in recovery, Charlotte courts Claude for her renegade fashion house.
- 11:00 Mercy Street: The New Nurse**  
A New England nurse navigates her first day in a Union hospital in an occupied southern town.

## November 13 / Monday

PM

- 8:00 Antiques Roadshow: Junk in the Trunk 7**  
Appraisals for an American Folk Art cane and a 1927 Yankees team-signed baseball are highlighted.
- 9:00 My Story of Service: Michael Meer**  
Michael Meer of Grants Pass shares stories from his time serving as a Gunner in the Armed Chinook program during Vietnam. Tales include nearly crashing into a mountain top, discovering he had been shot during combat, and coming face to face with the realities of war.
- 9:30 Immense Possibilities: Not as Divided as You Think – Quiet Cooperation on Climate**  
Our three guests work every day with business and community leaders on issues of climate change.
- 10:00 Antiques Roadshow: Junk in the Trunk 3**  
Never-before-seen appraisals from the 2013 season include a sports collection and a very old book.



## Great Performances: Indecent

See Paula Vogel's Tony Award winner inspired by the true story of the controversial 1923 Broadway debut of Sholem Asch's *God of Vengeance*. The play with music looks at an explosive moment in theatrical history. *Indecent*'s heart-wrenching and emotional themes remain relevant today. The deeply thought-provoking play, dramatizing how freedoms and ideas were persecuted in the 1920s, conveys the message of love and tolerance that needs to be preserved and shared with audiences worldwide.

**Sunday, November 19 at Noon**



### 11:00 POV: Almost Sunrise

Two friends haunted by combat experiences embark on a 2,700-mile trek on foot across America.

## November 14 / Tuesday

PM

### 8:00 Finding Your Roots:

#### Children of the Revolution

Lupita Nyong'o, Carmelo Anthony, and Ana Navarro investigate the political choices of their fathers.

### 9:00 Vietnam War: The History of the World

When American troop withdrawals begin, soldiers left in Vietnam ask what they are fighting for.

### 11:00 On Two Fronts: Latinos & Vietnam

Examine the Latino experience during a war that placed its heaviest burden on the working class.

## November 15 / Wednesday

PM

### 8:00 Year in Space

Go behind-the-scenes of astronaut Scott Kelly's 12-month stay on the International Space Station.

### 9:00 The Farthest – Voyager in Space

Launched in 1977, NASA's epic Voyager missions revolutionized our understanding of our galaxy.

### 11:00 Makers: Women in Space

Interviews with astronauts help trace the history of women pioneers in the U.S. space program.

## November 16 / Thursday

PM

### 8:00 Oregon Art Beat: Vietnam

Portland artist Dao Strom uses images/video/photography, music, and writing to explore the intersection of her Vietnamese birth and American life. Thomas Orr is the former head of the ceramics program at the Oregon College of Art and Craft in Portland.

### 9:00 Midsomer Murders:

#### They Seek Him Here, Part 1 & 2

Barnaby investigates when a director is beheaded by a guillotine on the set of his latest film.

### 10:35 Lake of Betrayal

The Kinzua Dam in Pennsylvania and its impact on the Seneca Nation of Indians are explored.

## November 17 / Friday

PM

### 8:00 Doc Martin: Don't Let Go

Joe Penhale is desperate to keep his ex-wife Maggie. Tension is mounting between Louisa and Martin.

### 9:00 Shetland

Tosh returns apparently unharmed, but the truth later comes out. Perez continues to investigate the double murder case, but finds bureaucracy getting in the way, until he tracks down a rape victim and discovers that her attacker was the son of Phyllis Brennan.

**10:00 Shetland**

DI Perez and his team discover that the person responsible for the deaths of Robbie Morton and Michael Thompson is closer to home than they had thought.

**11:00 Poldark Season 3 on Masterpiece, Ep. 7**

George triumphs, as the ground collapses under his relationship with Elizabeth.

## November 18 / Saturday

PM

**7:30 Rick Steves' Europe: Greece's Peloponnese**

The ruins of Olympia, the charming old port town of Nafplio, and the Rock of Gibraltar are explored.

**8:00 Globe Trekker Tough Boats: The Nile, Egypt**

The temples of Ramses the 2nd, the Great Pyramids, and more sites along the Nile River are explored.

**9:00 800 Words**

George is under orders not to write a newspaper story about an eight-year-old mystery.

**10:00 Silent Witness: In a Lonely Place, Part 1**

Nikki and Jack head to Scotland to investigate the murder of a lap dancer found in a remote forest.

**10:55 Silent Witness: In a Lonely Place, Part 2**

Nikki, Jack, and DS Ross find themselves under pressure to urgently close the net on a serial killer.

## November 19 / Sunday

AM

**9:00 Rick Steves Special: The Holy Land, Israelis & Palestinians Today**

Rick Steves explores Jerusalem, Tel Aviv, a home in Bethlehem, a university in Ramallah, and more.

**11:00 Age Reversed with Miranda Esmonde-White**

Valuable insights on how to combat the physical signs and consequences of aging are presented.

PM

**12:00 Great Performances: Indecent**

Paula Vogel's Tony Award winner is inspired by an explosive moment in theatrical history.

**2:00 On Two Fronts: Latinos & Vietnam**

Examine the Latino experience during a war that placed its heaviest burden on the working class.

**6:00 Oregon Art Beat: Vietnam**

Please see Thurs., November 16 at 8 pm.

**7:00 Home Fires on Masterpiece, Ep. 4**

Frances plans an air raid shelter, and Steph hides a secret that threatens the farm.

**8:00 The Durrells in Corfu Season 2 on Masterpiece**

Louisa, Leslie, and Spiro rescue Dr. Petrides as he deals with women in labor and a stabbing victim.

**9:00 Poldark Season 3 on Masterpiece, Ep. 8**

Elizabeth turns the tables on George, and Demelza and Lt. Armitage reveal their true feelings.

**10:00 Collection on Masterpiece**

Nina is torn between Claude, Billy, and the baby she gave up for adoption.

**11:00 Mercy Street: The Haversack**

Confederate belle Emma Green is determined to nurse her wounded friend.

## November 20 / Monday

PM

**8:00 Antiques Roadshow: Greatest Gifts**

Items that guests received as presents include a Louis Comfort Tiffany necklace and a Fender bass.

**9:00 My Story of Service:**

**Wallace "Van" Nicholas of Medford**

Wallace "Van" Nicholas of Medford shares stories from his time serving as an Army pilot in Vietnam. Tales include flying into an "orange wall of fire," a rescue mission on a moonless night, surviving a helicopter crash through 200 feet of jungle, and coming to terms with the reality of war.

**10:00 David Letterman: The Mark Twain Prize**

Emmy award-winning comedian David Letterman receives the 2017 Mark Twain Prize for American Humor.

**11:30 Eddie Murphy: The Mark Twain Prize**

Some of the biggest names in comedy take the stage to salute comedian and actor Eddie Murphy.

## November 21 / Tuesday

PM

**8:00 Finding Your Roots:**

**Relatives We Never Knew We Had**

Actresses Tea Leoni and Gaby Hoffmann are introduced to the life stories of their ancestors.

# Select SOPTV-PBS Program Descriptions



## Pollyanna

After the death of her father, Pollyanna moves in with her embittered aunt. Soon, she charms everyone in the village she now calls home — except her cold-hearted aunt who refuses to see the brighter side of life. Aunt Polly, despite her vast wealth, treats Pollyanna more like an stranger than a relative, but when tragedy strikes, Pollyanna's sunny outlook persuades her aunt to confront past ghosts and embrace the promise of happiness.

**Thursday, November 23 at 10:30 am**



### 9:00 Vietnam War: A Disrespectful Loyalty

President Nixon strikes a peace deal with Hanoi that allows American prisoners of war to come home.

### 11:00 Local Focus: Conversation About the Vietnam War

A community discussion among those who served our country, including those who fought in and those who fought against the war.

## November 22 / Wednesday

PM

### 8:00 Nature: Nature's Miniature Miracles

Survival stories of the world's smallest animals, including a tiny sengi and a small shark, are shared.

### 9:00 NOVA: Extreme Animal Weapons

Discover the secrets that underlie nature's battleground as claws, horns, and fangs are explored.

### 10:00 Frontline: Poor Kids

An intimate portrait of the economic crisis in America focuses on what poverty means to children.

### 11:00 This Is the House That Jack Built

The early years of President John F. Kennedy are chronicled and his lasting legacy is examined.

## November 23 / Thursday

AM

### 10:30 Pollyanna

A young orphan uses her charm and captures the hearts of family, friends and strangers alike.

PM

### 12:30 The Durrells in Corfu Season 2 on Masterpiece, Pt. 1

After Louisa meets a handsome fellow Brit named Hugh, her landlady suddenly turns hostile.

## Donate your car - Support SOPTV

Have an extra car and need a tax credit?

**Donate it to SOPTV!**

**Easy & Convenient**

**Tax Receipt Given**

To donate a vehicle or for more information, please call toll free

**1-877-957-6788**





**1:30 The Durrells in Corfu Season 2 on Masterpiece, Pt. 2**  
Louisa has an idea to boost Larry's writing career. It doesn't go well. Leslie starts a distillery.

**2:30 The Durrells in Corfu Season 2 on Masterpiece, Pt. 3**  
A birthday party for Louisa leaves her brooding about her age. Leslie takes up fashion photography.

**3:30 The Durrells in Corfu Season 2 on Masterpiece, Pt. 4**  
Aunt Hermione arrives with a spiritualist who promises to get in touch with Louisa's dead husband.

**4:30 The Durrells in Corfu Season 2 on Masterpiece, Pt. 5**  
Vasilisa makes the least-romantic proposal in history and Spiro and Hugh organize a cricket match.

**5:30 The Durrells in Corfu Season 2 on Masterpiece, Pt. 6**  
Louisa, Leslie, and Spiro rescue Dr. Petrides as he deals with women in labor and a stabbing victim.

**8:00 Songbook Standards: As Time Goes By**  
Host Jack Jones presents a nostalgic hit parade of best-loved songs from the 1950s and 1960s.

**10:00 Candy Bomber**  
In 1948 American pilot Gail "Hal" Halvorsen delivered candy to children living in post-war Germany.

**11:00 Nell Robinson & Jim Nunally Band**  
Nell Robinson and Jim Nunally perform original tunes and country classics at the legendary Sierra Nevada Brewery concert hall.

## November 24 / Friday

PM

**8:00 Doc Martin: Cats and Sharks**  
Martin plans to leave Portwenn to resume his career as a surgeon after his baby's christening.

**9:00 Agatha Christie's The Witness for the Prosecution**  
In 1920s London, a young chancer is accused of the brutal murder of a glamorous and rich woman.

**11:00 Poldark Season 3 on Masterpiece, Ep. 8**  
Elizabeth turns the tables on George, and Demelza and Lt. Armitage reveal their true feelings.

## Introducing



# SOPTV | Passport

*A new member benefit that provides extended on-demand access to quality PBS & SOPTV programming.\**




## Quality shows. On your schedule.

SOPTV Passport is an added benefit for valued donors to public television.

With SOPTV Passport, you can enjoy past episodes of many of your favorite PBS and SOPTV shows on-demand using your computer, smartphone, or tablet.

If you are a member at the \$60 per year level or \$5 per month as a sustainer, and you haven't activated your Passport benefit, contact us at [info@soptv.org](mailto:info@soptv.org)

Then, visit [video.soptv.org](http://video.soptv.org). When you see the compass  on a video, it's available only to members like you!

For more information, visit [www.soptv.org/passport](http://www.soptv.org/passport)



## Anne of Green Gables

A new adaptation of Lucy Maud Montgomery's classic novel tells the story of Anne Shirley, a precocious orphan placed in the care of uptight Marilla Cuthbert and her brother Matthew, played by acclaimed actor Martin Sheen. The conservative Marilla has a profound effect on the adventurous Anne. The story creates a journey of learning and personal engagement that has resonated with generations.

**Sunday, November 26 at 8 pm**



## November 25 / Saturday

PM

**10:00 21 Days to a Slimmer Younger You with Dr. Kellyann**

Dr. Kellyann explains how you can undergo your own life-changing weight loss transformation.

**11:30 Carole King – James Taylor Live at the Troubadour**

Taylor and King celebrate the 50th anniversary of the Los Angeles club with a great set of songs.

PM

**1:00 New Rules of Food with Kristin Kirkpatrick**

Learn simple, life-changing steps to get your diet, weight, energy, and overall health back on track.

**2:30 Candy Bomber**

In 1948 American pilot Gail "Hal" Halvorsen delivered candy to children living in post-war Germany.

**3:30 '60s Pop, Rock & Soul**

Includes pop sounds from Frat Rock to Surf Pop, the British Beats, Motown, Soul, and Pop classics.

**6:00 Rick Steves Special: The Holy Land, Israelis & Palestinians Today**

Rick Steves explores Jerusalem, Tel Aviv, a home in Bethlehem, a university in Ramallah, and more.

**8:00 The Beatles: Eight Days a Week The Touring Years**

See the remarkable story of how The Beatles became a global phenomenon.

**10:30 Sgt. Pepper's Musical Revolution**

Celebrate the 50th anniversary of the groundbreaking Beatles album.

## November 26 / Sunday

AM

**9:00 Oregon Revealed: An Oregon Field Guide Special**

Oregon's spectacular vistas span from the windblown dunes of Florence to the snowcapped Wallowa Mountains, from lush, green old-growth forests to the dusty flats of the Alvord desert.

**10:30 Oregon Revealed 2: Coastal Wonder**

This *Oregon Field Guide* special invites you to take in hidden treasures and aerial views of the Oregon Coast.

PM

**12:00 '60s Pop, Rock & Soul**

Includes pop sounds from Frat Rock to Surf Pop, the British Beats, Motown, Soul, and Pop classics.

**2:00 21 Days to a Slimmer Younger You with Dr. Kellyann**

Dr. Kellyann explains how you can undergo your own life-changing weight loss transformation.

**3:30 Suze Orman's Financial Solutions for You**

Suze Orman provides advice to help individual viewers "find financial solutions for you."

**6:30 Oregon Revealed: An Oregon Field Guide Special**

Oregon's spectacular vistas span from the windblown dunes of Florence to the snowcapped Wallowa Mountains, from lush, green old-growth forests to the dusty flats of the Alvord desert.

**8:00 Anne of Green Gables (2016)**

Orphaned Anne is placed in the care of uptight Marilla in a new adaptation of the classic novel.

**10:00 Victoria Returns**

In 1837, a diminutive, neglected teenager is crowned Queen Victoria, navigates the scandal, corruption, and political intrigues of the Court, and soon rises to become the most powerful woman in the world. Catch up on Season 1 and get a glimpse of the upcoming Season 2.

**10:30 Carole King – James Taylor Live at the Troubadour**

Taylor and King celebrate the 50th anniversary of the Los Angeles club with a great set of songs.

**November 27 / Monday**

PM

**8:00 The '80s**

Take a joyful jump into the 1980s and harken back to the era when music videos ruled the airwaves.

**10:00 Suze Orman's Financial Solutions for You**

Suze Orman provides advice to help individual viewers "find financial solutions for you."

**November 28 / Tuesday**

PM

**8:00 Vietnam War: The Weight of Memory**

For the next 40 years, Americans and Vietnamese from all sides search for healing and reconciliation.

**10:00 Reflections on the Vietnam War**

This program tells the overall story of Ken Burns' and Lynn Novick's groundbreaking film by featuring

key, emotionally powerful, and historic moments carefully woven together from the epic 18-hour film to convey the essence of this landmark production

**11:30 Victoria Returns**

Please see Sunday, Nov. 26 at 10 pm.

**November 29 / Wednesday**

PM

**8:00 Beyond a Year in Space**

Astronaut Scott Kelly's last day in space, his return to Earth, and astronaut training are featured.

**9:30 How Not to Die with Michael Greger, MD**

Dr. Michael Greger takes you through ten causes of premature death and disease, and tells you how you can protect yourself from these devastating diseases with a plant-based diet.

**11:00 Candy Bomber**

In 1948 American pilot Gail "Hal" Halvorsen delivered candy to children living in post-war Germany.

**November 30 / Thursday**

PM

**8:00 Oregon Revealed: An Oregon Field Guide Special**

Please see Sunday, Nov. 26 at 9 am.

**9:30 Oregon Revealed 2: Coastal Wonders**

Please see Sunday, Nov. 26 at 10:30 am.

**11:00 '60s Pop, Rock & Soul**

Includes pop sounds from Frat Rock to Surf Pop, the British Beats, Motown, Soul, and Pop classics.

## *Leave a Legacy for the Future*

Ensure that future generations enjoy the quality programming you love that educates, enlightens, inspires and entertains.

**Legacy gifts include:**

- Bequest through a will or living trust
- Retirement plan or life insurance policy naming SOPTV, Inc. as a beneficiary



For information about the benefits, please call **Mark** at (541) 779-5602

# Overnight Program Listings for SOPTV-PBS

	12:00	12:30	1:00	1:30	2:00	2:30	3:00	3:30	4:00	4:30	5:00	5:30
1	Democracy Now!		Antiques Roadshow		My Story of Service	Immense Possibilities		Edgar Allan Poe American Masters		Words on the Wind There, and Back	Nightly Business	Growing Greener
2	Democracy Now!		Finding Your Roots			Vietnam War Things Fall Apart		America's Secret War			Nightly Business	Growing Greener
3	Democracy Now!		Nature: Giraffes Africa's Gentle			NOVA: Killer Hurricanes		Frontline: Putin's Revenge, Pt. 2		Doctor Fix: New Era of Modern Medicine	Nightly Business	Growing Greener
4	Democracy Now!				Live from Lincoln Center Fallettos			Tanglewood		Xerox Rochester International Jazz	Nightly Business	BBC News
5	Home Fires on Masterpiece		Or. Art Beat	Or. Field Guide		Midsomer Murders: Death & Dust, Pt. 1 & 2				Sherlock on Masterpiece The Lying Detective		Smith's Garden
6	Globe Trekker		Doc Martin			Shetland		Shetland		Home Fires on Masterpiece	Asia Insight	Growing Greener
7	Indep. Lens	Shoeless Blues	Durrells 2 in Corfu on Masterpiece			Poldark 3 on Masterpiece, Ep. 6		Collection on Masterpiece		Last Tango in Halifax	Nightly Business	Growing Greener
8	Democracy Now!		Antiques Roadshow		My Story of Service	Immense Possibilities		Antiques Roadshow		Independent Lens: Chasing Trane – John Coltrane Doc.		Growing Greener
9	Democracy Now!		Finding Your Roots			Vietnam War The Vener of Civilization				Local Focus Metal Road	Nightly Business	Growing Greener
10	Democracy Now!		Nature: The Cheetah Children			NOVA: Killer Floods		Frontline: The Business of Disaster		Journey Home to the USS Arizona	Nightly Business	Growing Greener
11	Democracy Now!		Great Performances: Noel Coward's Present Laughter							Richard Linklater: American Masters	Nightly Business	BBC News
12	Home Fires on Masterpiece		Or. Art Beat	Or. Field Guide		Midsomer Murders: Picture of Innocence, Pt. 1 & 2				Sherlock on Masterpiece The Final Problem	Garden Smart	Smith's Garden
13	Globe Trekker		Doc Martin			Shetland		Shetland		Home Fires on Masterpiece	Asia Insight	Growing Greener
14	POV: Almost Sunrise (cont.)		Durrells 2 in Corfu on Masterpiece			Poldark 3 on Masterpiece, Ep. 7		Collection on Masterpiece		Mercy Street The New Nurse	Nightly Business	Growing Greener
15	On Two Fronts	Elizabeth's Soldiers	Antiques Roadshow		My Story of Service	Immense Possibilities		Antiques Roadshow			POV: Almost Sunrise	
16	Democracy Now!		Finding Your Roots			Vietnam War The History of the World Farthest				On Two Fronts: Latinos & Vietnam		Growing Greener
17	Democracy Now!		Year in Space			Voyager in Space				Makers: Women in Space	Nightly Business	Growing Greener
18	Democracy Now!		Gr. Performances In the Heights			Foo Fighters Landmarks Live...		Carole King – James Taylor Live...		Xerox Rochester Int'l Jazz Festival	Nightly Business	BBC News
19	Home Fires on Masterpiece		Or. Art Beat	Or. Field Guide		Midsomer Murders: They Seek Him Here, Pt. 1 & 2				Lake of Betrayal	Garden Smart	Smith's Garden
20	Globe Trekker		Doc Martin			Shetland		Shetland		Home Fires on Masterpiece	Asia Insight	Growing Greener
21	Eddie Murphy: Mark Twain Prize		Durrells 2 in Corfu on Masterpiece			Poldark 3 on Masterpiece, Ep. 8		Collection on Masterpiece		Mercy Street The Haversack	Nightly Business	Growing Greener
22	Democracy Now!		Antiques Roadshow		My Story of Service			David Letterman: The Mark Twain Prize		Erma Bombeck	Nightly Business	Growing Greener
23	Democracy Now!		Finding Your Roots			Vietnam War A Disrespectful Loyalty				Local Focus Conv. About Vietnam	Nightly Business	Growing Greener
24	Democracy Now!		Nature: Nature's Miniature Miracles			NOVA: Extreme Animal Weapons		Frontline: Poor Kids		This Is the House That Jack Built	Nightly Business	Growing Greener
25	Democracy Now!		Great Performances: Indecent					On Two Fronts: Latinos & Vietnam		Beyond La Bamba	Nightly Business	BBC News
26	Home Fires on Masterpiece		Songbook Standards: As Time Goes By					Suzie Orman's Financial Solutions for You			Garden Smart	Smith's Garden
27	New Rules of Food with Kristin Kirkpatrick		On the Psychiatrist's Couch with Daniel Amen, MD					21 Days to a Slimmer You			Asia Insight	Growing Greener
28			Beatles: Eight Days a Week The Touring Years					Sgt. Pepper's Musical Revolution		Candy Bomber	Nightly Business	Growing Greener
29			Anne of Green Gables			Oregon Revealed				On the Psychiatrist's Couch with Daniel Amen, MD	Nightly Business	Growing Greener
30			The 80s			Oregon Revealed 2 Coastal Wonders				New Rules of Food with Kristin Kirkpatrick	Nightly Business	Growing Greener



Find us on  
**Facebook**

Go to [www.facebook.com/soptv](http://www.facebook.com/soptv) to find our Facebook Page & click the  button for news, photos, stories & events.



**THANKS TO OUR WONDERFUL BUSINESS PARTNERS,  
WHO MAKE SOPTV'S QUALITY TELEVISION POSSIBLE!**

AllCare Health: *NewsHour, Antiques Roadshow, Masterpiece*  
 Ashland Food Cooperative: *The Visionaries, Create*  
 Bob Thomas Automotive: *Full Schedule Rotation*  
 Central Art Supply: *Oregon Art Beat, Grand View*  
 Chamber Music Concerts: *Full Schedule Rotation*  
 Chieco, Victor & Eileen: *Immense Possibilities*  
 The Collins Foundation: *Local Focus: Project 22 & Our Homeless Heroes, Families at War, The Vietnam War; My Story of Service, Season 2*  
 Cow Creek Band of the Umpqua Tribe: *My Story of Service, Local Focus, Project 22*  
 Dogs for the Deaf, Inc.: *Full Schedule Rotation*  
 Earth & Humanity Foundation/Wendy Seldon: *Immense Possibilities*  
 Ed's Point S Tire & Auto Service: *NewsHour, Motorweek*  
 Energy Trust of Oregon: *Evening Rotation*  
 Friends of Sanctuary One/Matthew Haines: *Immense Possibilities*  
 Harry & David: *My Story of Service, Evening Rotation*  
 Herb Rothschild: *Immense Possibilities*  
 Hunter Communications: *Full Schedule Rotation*  
 Kitchen Company: *Evening Rotation, Daytime Cooking Shows*  
 Knife River Materials: *My Story of Service*  
 Legends Pottery: *Victory Garden, Evening Rotation*  
 Medford Mattress: *Full Schedule Rotation*  
 Medical Eye Center: *Evening Rotation, Guide*  
 Mt. Shasta Spring Water: *NewsHour*  
 Oregon 529 College Plan: *Full Schedule Rotation*  
 Oregon Cabaret: *Evening Rotation*  
 Oregon Cultural Trust: *Evening Rotation*  
 Oregon State Lottery: *Evening Rotation*  
 Oregon Wine Experience: *Evening Rotation*

People.Solutions/Matt Oliva & Greeley Wells: *Immense Possibilities*  
 Porter's Dining at the Depot: *Evening Rotation*  
 Ray's Food Place: *Our Town – Gold Hill*  
 Recology Ashland: *Full Schedule Rotation*  
 Repertory Singers: *Full Schedule Rotation*  
 Rogue Valley Coin & Jewelry: *Antiques Roadshow, Nightly Business Report*  
 Rogue Valley Symphony: *Full Schedule Rotation*  
 Roots & Wings Community Preschool: *PBS Kids*  
 Sage, Peter: *Student Showcase, Immense Possibilities*  
 Scrappy Craft: *Jerry Yarnell School of Fine Art, Best of Joy of Painting, Paint This w/ Jerry Yarnell*  
 Shop 'N' Kart: *Evening Rotation*  
 Siskiyou Singers: *Full Schedule Rotation, Guide*  
 Southern Oregon Family Magazine: *PBS Kids*  
 Southern Oregon Magazine: *Nature*  
 Southern Oregon Pediatrics: *Sesame Street*  
 Southern Oregon Repertory Singers: *Evening Rotation*  
 Southern Oregon Sanitation: *New Tricks*  
 Southern Oregon University Marketing: *Immense Possibilities*  
 Storytelling Guild: *PBS Kids, Guide*  
 Terra Firma Home: *Charlie Rose, Evening Rotation*  
 Thalden, Barry & Kathryn: *Immense Possibilities*  
 This Is the Edge/Grant Williams: *Immense Possibilities*  
 Top Stitch: *Quilting Programs, Masterpiece*  
 Turtle Bay Exploration Park: *Full Schedule Rotation*  
 US Bank Foundation: *Supporting the Arts on SOPTV*  
 Wild Birds Unlimited: *Nature*  
 Wildlife Images: *Full Schedule Rotation*  
 York, Elizabeth: *Immense Possibilities*  
 Young at Heart Magazine: *Evening Rotation*

**CALL ROBERT AT  
541.779.5653 to**

**EXPLORE**

**SPONSORSHIP OPPORTUNITIES**



# Repeats Schedule for SOPTV-PBS

## 21 DAYS TO A SLIMMER YOUNGER YOU WITH DR KELLYANN

Sun 11/26 at 2:00pm  
Mon 11/27 at 3:00am

## 60S POP, ROCK & SOUL

Sun 11/26 at Noon  
Thu 11/30 at 11:00pm

## 80S

Thu 11/30 at Midnight

## ANNE OF GREEN GABLES (2016)

Wed 11/29 at Midnight

## ANTIQUES ROADSHOW

### OUR 50 STATES 2

Wed 11/08 at 1:00am

### SURVIVORS

Wed 11/08 at 3:00am

### JUNK IN THE TRUNK 7

Wed 11/15 at 1:00am

### JUNK IN THE TRUNK 3

Wed 11/15 at 3:00am

### GREATEST GIFTS

Wed 11/22 at 1:00am

## BEATLES: EIGHT DAYS A WEEK - THE TOURING YEARS

Tue 11/28 at Midnight

## CANDY BOMBER

Thu 11/23 at 10:00pm  
Sat 11/25 at 2:30pm  
Tue 11/28 at 4:00am  
Wed 11/29 at 11:00pm

## CAROLE KING – JAMES TAYLOR LIVE AT THE TROUBADOUR

Sat 11/18 at 3:00am  
Sat 11/25 at 11:30am  
Sun 11/26 at 10:30pm

## COLLECTION ON MASTERPIECE

Tue at 3:00am

## DAVID LETTERMAN: THE MARK TWAIN PRIZE

Wed 11/22 at 3:00am

## DOC MARTIN

Mon at 1:00am

## DOCTOR FIX: A NEW ERA OF MODERN MEDICINE

Fri 11/03 at 4:00am

## DURRELLS IN CORFU SEASON 2 ON MASTERPIECE

Tue at 1:00am – Plus see Marathon info on pp. 24–25

## FARTHEST - VOYAGER IN SPACE

Fri 11/17 at 2:00am

## FINDING YOUR ROOTS

### IMMIGRANT NATION

Thu 11/02 at 1:00am

### BLACK LIKE ME

Thu 11/09 at 1:00am

## CHILDREN OF THE REVOLUTION

Thu 11/16 at 1:00am

## RELATIVES WE NEVER KNEW WE HAD

Thu 11/23 at 1:00am

## FRONTLINE

### PUTIN'S REVENGE, PART 2

Fri 11/03 at 3:00am

### BUSINESS OF DISASTER

Fri 11/10 at 3:00am

### POOR KIDS

Fri 11/24 at 3:00am

## GREAT PERFORMANCES

### NOEL COWARD'S PRESENT LAUGHTER

Sat 11/11 at 1:00am

### IN THE HEIGHTS: CHASING BROADWAY DREAMS

Sat 11/18 at 1:00am

### FOO FIGHTERS - LANDMARKS LIVE IN CONCERT

Sat 11/18 at 2:00am

### INDECENT

Sat 11/25 at 1:00am

## HOME FIRES ON MASTERPIECE

### EPISODE ONE

Sun 11/05 at Midnight

### EPISODE TWO

Mon 11/06 at 4:00am  
Sun 11/12 at Midnight

### EPISODE THREE

Mon 11/13 at 4:00am  
Sun 11/19 at Midnight

### EPISODE FOUR

Mon 11/20 at 4:00am  
Sun 11/26 at Midnight

## IMMENSE POSSIBILITIES

Wed at 2:30am  
Thu at 6:00pm  
Sun at 4:30pm

## INDEPENDENT LENS: CHASING TRANE

Wed 11/08 at 4:00am

## JOURNEY HOME TO THE USS ARIZONA

Fri 11/10 at 4:00am

## LAKE OF BETRAYAL

Sun 11/19 at 3:38am

## LOCAL FOCUS

### THE VIETNAM WAR

Thu 11/09 at 4:00am

### A CONVERSATION ABOUT THE VIETNAM WAR

Thu 11/23 at 4:00am

## MAKERS: WOMEN IN SPACE

Fri 11/17 at 4:00am

# Repeats Schedule for SOPTV-PBS

## MERCY STREET

### THE NEW NURSE

Tue 11/14 at 4:00am

### THE HAVERSACK

Tue 11/21 at 4:00am

## MIDSOMER MURDERS

### DEATH AND DUST, PART 1 & 2

Sun 11/05 at 2:00am

### PICTURE OF INNOCENCE, PART 1 & 2

Sun 11/12 at 2:00am

### THEY SEEK HIM HERE, PART 1 & 2

Sun 11/19 at 2:00am

## MY STORY OF SERVICE

Wed at 2:00am

## NATURE

### GIRAFFES: AFRICA'S GENTLE GIANTS

Fri 11/03 at 1:05am

### THE CHEETAH CHILDREN

Fri 11/10 at 1:05am

### NATURE'S MINIATURE MIRACLES

Fri 11/24 at 1:03am

## NEW RULES OF FOOD WITH KRISTIN KIRKPATRICK

Mon 11/27 at Midnight

Thu 11/30 at 3:30am

## NOVA

### KILLER HURRICANES

Fri 11/03 at 2:03am

### KILLER FLOODS

Fri 11/10 at 2:03am

### EXTREME ANIMAL WEAPONS

Fri 11/24 at 2:00am

## ON THE PSYCHIATRIST'S COUCH WITH DANIEL AMEN, MD

Wed 11/29 at 3:30am

## ON TWO FRONTS: LATINOS & VIETNAM

Thu 11/16 at 4:00am

Sun 11/19 at 2:00pm

Sat 11/25 at 3:00am

## ONCE UPON A SESAME STREET CHRISTMAS

Thu 11/23 at 8:00am

Fri 11/24 at 10:30am

Sat 11/25 at 7:00am

## OREGON ART BEAT

Sun at 1:00am & 6:00pm

## OREGON FIELD GUIDE

Sun at 1:30am & 6:30pm

## OREGON REVEALED: AN OREGON FIELD GUIDE SPECIAL

Sun 11/26 at 6:30pm

Wed 11/29 at 2:00am

Thu 11/30 at 8:00pm

## OREGON REVEALED 2: COASTAL WONDERS

Thu 11/30 at 2:00am & 9:30pm

## POLDARK SEASON 3 ON MASTERPIECE SEASON 3

### EPISODE: FIVE

Fri 11/03 at 11:00pm

### EPISODE: SIX

Tue 11/07 at 2:00am

Fri 11/10 at 11:00pm

### EPISODE: SEVEN

Tue 11/14 at 2:00am

Fri 11/17 at 11:00pm

### EPISODE: EIGHT

Tue 11/21 at 2:00am

Fri 11/24 at 11:00pm

## POV: ALMOST SUNRISE

Wed 11/15 at 4:00am

## RICHARD LINKLATER: AMERICAN MASTERS

Sat 11/11 at 3:30am

## SGT. PEPPER'S MUSICAL REVOLUTION

Tue 11/28 at 2:30am

## SHERLOCK SEASON 4 ON MASTERPIECE

### THE LYING DETECTIVE

Sun 11/05 at 3:36am

### THE FINAL PROBLEM

Sun 11/12 at 3:36am

## SHETLAND

Mon at 2:00am & 3:00am

## SONGBOOK STANDARDS: AS TIME GOES BY

Sun 11/26 at 1:00am

## SUZE ORMAN'S FINANCIAL SOLUTIONS FOR YOU

Sun 11/26 at 3:00am & 3:30pm

Mon 11/27 at 10:00pm

## THIS IS THE HOUSE THAT JACK BUILT

Fri 11/24 at 4:00am

## VICTORIA RETURNS

Sun 11/26 at 10:00pm

Tue 11/28 at 11:30pm

## VIETNAM WAR

### THINGS FALL APART

Thu 11/02 at 2:00am

### THE VENEER OF CIVILIZATION

Thu 11/09 at 2:00am

### THE HISTORY OF THE WORLD

Thu 11/16 at 2:00am

### A DISRESPECTFUL LOYALTY

Thu 11/23 at 2:00am

## YEAR IN SPACE

Fri 11/17 at 1:02am

Program listings were up-to-date at the time this publication went to print.

NON-PROFIT ORG.  
U.S. POSTAGE  
PAID  
Permit No. 25  
Medford, Oregon  
97501



[www.soptv.org](http://www.soptv.org)

**Have you logged on? If you haven't, look what you've been missing:**

**Program Previews Up-to-date Schedule ...and Much, Much More**

## CRATERIAN PERFORMANCES PRESENTS

**THE IMPROVISED SHAKESPEARE COMPANY**

sponsored by KTVL News 10

**Thursday, November 2, 7:30pm**  
\$22, \$25, \$28, Youth/Stud. \$16, \$19, \$22

**Jim Blossoms**

CELEBRATING THE 25TH ANNIVERSARY OF  
**NEW MISERABLE EXPERIENCE**  
PERFORMING THEIR 5X PLATINUM  
RECORD IN ITS ENTIRETY!

sponsored by Adroit & The Valley 106.3

**Thursday, November 9, 7:30pm**  
\$37, \$40, \$43, Youth/Stud. \$28, \$31, \$34

**GingerBread JUBILEE**

**Baking Contest, Benefit  
Auction & Community Tour**  
**Fri.-Mon., November 17-20**  
Details online: [craterian.org](http://craterian.org)

**CHARLIE BROWN Christmas LIVE ON STAGE**

sponsored by Southern Oregon Credit Service & KDRV Newswatch 12

**Tuesday, November 28, 7pm**  
\$32, \$35, \$38

**TEEN MUSICAL THEATER OF OREGON**

**Seussical**

sponsored by Wells Fargo, Hunter Communications and KOBI NBC 5

**December 8-9 & 14-16**  
\$24, Youth (18 & under) \$12

**Tomáseen Foley's A Celtic Christmas**

sponsored by Hunter Communications

**Sat., December 23, 3 & 7:30pm**  
\$32, \$35, \$38, Youth/Stud. \$22, \$25, \$28

CRATERIAN THEATER at  
**THE COLLIER CENTER**  
for the Performing Arts

For more details or to  
purchase tickets: call, click  
or stop by the Box Office.

541-779-3000  
[www.craterian.org](http://www.craterian.org)  
BOX OFFICE: 16 S. Bartlett  
THEATER: 23 S. Central