

impact

EARLY CHILDHOOD
EDUCATION SUMMIT



GUIDE

JUNE 1, 2024 • GREENVILLE, NC
East Carolina University

WELCOME //

We're honored to join you at the third annual Impact Early Childhood Education Summit. This event has taken us across the state, and we're grateful to grow and focus on the unique assets of each community.

Today, as we honor and support children, we also recognize that many of us are concerned about funding for early childhood care and education. We empathize as fellow teachers, parents, caregivers and researchers who are trying to make sense of so many unknowns. Yet, we're here together as we see the value in continuing to learn how to better support children and families, build professional communities, ask for advice or lend a helping hand.

PBS North Carolina Education is dedicated to ensuring that we continue to learn, grow and uplift our neighbors. Thanks to the generous support of our partners and donors, we walk alongside you with a deep appreciation and acknowledgment of the challenges and opportunities that lie ahead.

With sincere gratitude,
PBS North Carolina Education



Keynote Speaker 4

Breakout Sessions A 6

Breakout Sessions B 10

Breakout Sessions C 16

Breakout Sessions D 22

PBS North Carolina Staff 28

Rootle Ambassadors 29

Education Specialists 30

Acknowledgments 31

Get the Impact Summit app for a more interactive experience:

- Explore the day's offerings and access the community board.
- View attendee profiles and build your network.
- Share comments, feedback and more.

Visit whova.com/portal/pncie_202406 for more info.





Kezia “Kate” Goodwin, a dedicated advocate with over 35 years of experience in early childhood education, channels her expertise toward healing and revitalizing the ECE ecosystem. Motivated by her journey as a mother navigating childcare, Kate became acutely aware of the disparities within the field. This realization ignited her passion to become a servant leader and catalyst for change within the ECE community.

As the cofounder of Truth Education Foundation, a pioneering nonprofit in North Carolina, Kate focuses on addressing

implicit bias, expulsion and exclusionary practices among educators. Her organization's innovative approach has garnered recognition for its commitment to empowering educators and fostering inclusive learning environments.

In addition to her role with Truth Education Foundation, Kate serves as the CEO of Kate's Korner Learning Center in Durham. Through this nurturing early learning environment, she provides a safe haven for children while actively consulting and guiding other providers through Kate's Korner Empowerment Model.

Kate's Korner Empowerment Model has earned her national acclaim, recognizing her as an authority in early childhood education restoration by entities such as the SBA. She has also contributed her insights on addressing disparities within early education to the Biden-Harris administration.

Driven by her belief in the power of compassionate witnessing and healing, Kate strives to create space for the next generation to thrive and flourish.

In her keynote talk, Kate will discuss how empowering early childhood educators and addressing their unmet needs are crucial to improving the overall quality of childcare and education provided to young children.

NOTES:

[illegible]



Keynote Follow-Up: Restore Empowerment Model

Do you have any questions on implementation of Kate Goodwin's Restore Empowerment Model or what it might look like in your situation? Come to this follow-up talk-back session with Kate Goodwin and Kenia Thompson, host of the PBS North Carolina series *Black Issues Forum*.

PRESENTERS

Kate Goodwin, Truth Education Foundation

Kenia Thompson, PBS North Carolina



Nature Play: Supporting Mind, Body & Heart

Children have a natural affinity for nature and see it as inviting, full of mystery and possibilities. Playing outside affords a space for the ebb and flow of friendships, exploration and soaring imaginations. All children benefit from playing, yet some may need our support to be able to make choices and access play opportunities. Children of all abilities deserve the opportunity to experience the wide range of their emotions, be among other children, get muddy and take a risk.

PRESENTERS

Linda Kinney, North Carolina Zoo

Kathy Osborne, North Carolina Zoo



Parental Engagement, Portfolios & Literacy Development with Spanish-Speaking Families

There are different activities educators can implement to increase parental engagement. One method that will be discussed in this session will be the use of portfolios that parents can maintain throughout the school year. The portfolio is an artifact that can provide parents with tangible proof of their child's progress throughout the school year. The presentation will also include examples of activities that educators can use to get parents involved.

PRESENTER

Sandra Plata-Potter, UNC Pembroke



Laying the Foundation: Experiences & Relationships That Promote Infant & Early Childhood Mental Health

The infant and early childhood mental health (IECMH) field includes services, supports and policies necessary to promote healthy development, prevent ongoing problems and treat mental health disorders. We'll explore the ways in which the NC Infant and Early Childhood Mental Health Association is working to create an IECMH workforce, including the launch of the IECMH Endorsement credential and growing the capacity for the provision of reflective supervision/consultation in support of practitioners' skills.

PRESENTER

Ro Lewis, NC Infant and Early Childhood Mental Health Association



Let's Get Messy! How to Facilitate Process-Based Art in Early Childhood Education Classrooms

This presentation will arm teachers with knowledge of what process-based art is and how to facilitate it in their own classrooms. Learn about relevant research, writing development, the benefits of process-based art and how to implement it in the classroom, plus engage in your own experience of process-based art.

PRESENTER

Laekan Holzworth, Smart Start of Yadkin County



Pens & Playdough: Crafting Pre-K Writers

Explore how to nurture young writers, from initial scribbles to captivating narratives. We'll uncover the various stages of writing development, providing insights into how children progress from simple marks to coherent compositions. Participants will gain a deeper understanding of the skills involved in each stage, empowering educators to support their writing journeys effectively. We'll also offer practical guidance on implementing writing in diverse learning centers.

PRESENTER

Shakekia Moss, Smart Start of Mecklenburg County



CANCELED

Big Conversations with Little Children: Making Sense of the World

Get an introduction to a framework of how to answer questions young children have about social, political, family and other societal issues, which may be emotional and very adult for them. This framework will help bolster young children's social-emotional development while alleviating anxiety and affirming the child.

PRESENTER

Lauren Loquasto, Goddard Schools



Building a DOCC: Defining High-Quality Drop-Off Childcare

Participants will examine a university-based model of high-quality drop-off childcare with a focus on supporting student parents. This session will define operational policies and procedures for establishing drop-off childcare. Emphasis will be placed on defining high-quality practices in drop-off childcare.

PRESENTERS

Susannah Berry, East Carolina University

Ashley Norris, East Carolina University

Brianna Webb, East Carolina University



How I Feel About Me!

This presentation includes stories and activity ideas from PBS LearningMedia crafted for educators seeking to foster the social-emotional development of young learners. Educators will explore conversation cards from the “Let’s Talk” and “Let’s Do” experience and discover how PBS integrates Foundations of Early Learning and Development standards. This presentation will help you understand, implement and nurture skills essential for children’s holistic growth.

PRESENTERS

Khalilah Gilmore, PBS North Carolina

Dr. LaToya McCrimmon, Durham Public Schools; PBS North Carolina



Representation Matters: Using Children’s Books to Foster Diversity in the Preschool Classroom

With a focus on providing services through an equitable lens, participants will learn the role of children’s books in fostering conversations about diversity in preschool classrooms. Participants will learn strategies on how they can select children’s books that authentically represent diverse groups.

PRESENTER

Debbie Johnson, East Carolina University



MOVED TO SESSION D

PBS LearningMedia 101

In this hands-on session, explore the adaptive and multimodal possibilities of PBS LearningMedia. Participants will dive into research-based, classroom-ready digital learning experiences and tools to engage learners in exploring concepts that align with national and state standards. Join to watch, play, explore and share.

PRESENTER

Jennelle Lewis, PBS North Carolina



FAM

Caregiver Compass: Finding Direction Through Feedback & Engagement

This workshop will explore how engagement with and feedback from caregivers can serve as a compass for programs looking to deepen their impact and improve youth outcomes. Through interactive discussions, video and role-play activities, attendees will learn effective strategies for receiving meaningful feedback through authentic relationships with caregivers. Attendees will leave with practical and applicable tips for strengthening caregiver engagement within their own programs.

PRESENTER

Erica Reid, Friends of the Children

I-T

PRE

PRE
K

K-1

2-3

Empowering Children as Leaders

We'll reflect upon real-life experiences where children are active leaders in the classroom. Time will be spent reflecting on what leadership looks like in preschoolers and the skills that will support them. We'll explore how empowering leadership skills within children helps with behavior and classroom management. Together we'll also investigate strategies that support child leadership and how these strategies will provide opportunities for authentic data collection.

PRESENTERS

Libbi Farmer, UNC Charlotte

Joanna Aguilar, UNC Charlotte

PRE

PRE
K

When That Cat Named Pat Sat by a Big Black Bat: Embracing the Science of Reading in Early Childhood Classrooms

In this session, we'll discover important clarifications about what the Science of Reading is and what it is not. We will identify and discuss its five main pillars, and learn about implications for research-based language development and literacy learning in early childhood programs. Also, we can engage in a review of your current programming to discover the many things you're probably already doing that are substantiated by the Science of Reading approach.

PRESENTER

Laura Bilbrey, Teaching Strategies

I-T

PRE

PRE
K

Social-Emotional Development: How Relationships & Attachment Affect Development & Behavior

Examine how children develop socially and emotionally in the first five years, including the impact of relationships and attachment, empathy development, factors influencing behavior and strategies to address challenging behaviors.

PRESENTER

Alexandra Morris, UNC-Chapel Hill School of Social Work



Vocabulary Acquisition in Young Children & Its Impact on Optimal Literacy Outcomes

We'll discuss why single-word vocabulary knowledge is so critical to desired literacy outcomes and how daily interactions and the language we use every day can positively impact vocabulary development in very young children.

PRESENTER

Susan Hill, Pitt County Schools



Why “Fixing the Child” Isn’t Working: Understanding the Role a Child’s Environment Plays in Shaping Their Future

Children and families do not live in a vacuum. Yet, when it comes to addressing behavioral issues and trauma, we tend to focus our efforts on “treating” the child or family unit. The environment in which a child lives has everything to do with their life success and can hinder a child from reaching their full potential. This session focuses on shifting our perspective on how to improve outcomes by looking at and addressing issues in the child’s larger community and systems

PRESENTERS

Angela Lewis, North Carolina Partnership for Children
Mebane Boyd, North Carolina Partnership for Children



Writing the Right Decodable Text

Frustrated with the decodable texts that don’t match your phonics scope and sequence? Tired of decodable stories that don’t make sense? It may be time to start writing your own decodable texts. Learn how to write your own decodables aligned to your phonics scope and sequence with our easy-to-use four-step process. We’ll review online resources and materials to support writing decodables that your students will love.

PRESENTERS

Teresa Taylor, Frank Porter Graham Child Development Institute
Heather Aiken, Frank Porter Graham Child Development Institute

PRE PRE K K-1 2-3 FAM ADM

Empowering Whole Child Literacy: Collaborative Strategies for Families, Educators & Communities

Participants will gain insights into how to cultivate a child’s interest in reading and develop key literacy foundations through play and interaction. We’ll share effective approaches to improving children’s comprehension and practical use of information in print. Attendees will leave equipped with practical tools and a deeper understanding of how to create a supportive literacy framework that aligns with family values and encourages children to become active, enthusiastic learners.

PRESENTER
Nicole Fenner, Sister Girl Publishing LLC

FAM

MOVED TO SESSION D

Invisible Sentence: Recognizing, Supporting & Advocating for Children of Incarcerated & Returning Parents

There are an estimated 2.7 million children in the U.S. with at least one incarcerated parent (20,000+ in NC), with reports showing that more than 5.2 million children (160,000 in NC) have experienced parental incarceration at some point in their lives. This session will focus on what we know about the children, the impacts of parental incarceration, available resources, ways to collaborate to meet their needs and the importance of hearing from the children and families themselves.

PRESENTER
Melissa Radcliff, Our Children’s Place of Coastal Horizons

PRE PRE K

Projects, Play & Purpose: Supporting Emergent Literacy

Explore the key elements of a project-based approach to facilitate emergent literacy. Participants will be provided with sample projects that were implemented at the Nancy Darden Child Development Center. The presentation will explain how projects were planned, implemented and designed to document the emergent literacy skill of the children. Participants will learn strategies for replicating projects in other classrooms.

PRESENTER
Shannon Hall, Nancy Darden Child Development Center

ADM

The Practice of Collective Care: How School Leaders Can Better Support Their Latinx Educators & Students

Efforts across the state are exploring how to improve the recruitment and retention of educators of color to build learning environments that best support students. With the Latinx population being NC’s fastest-growing demographic, LatinxEducation interviewed 51 education leaders to better understand how we can increase Latinx leadership representation in education. During this session, participants will learn about key motivators and barriers Latinx education leaders experience across North Carolina.

PRESENTER
Lucia Lozano Robledo, LatinxEducation



Scribble, Draw, Write! Explore Writing Instruction in Preschool

Learn how to engage your students in developmentally appropriate activities that encourage them to communicate through scribbling, drawing and writing. Using read alouds as a starting point, we'll explore how to integrate writing into play-based activities to make daily writing practice a classroom norm.

PRESENTERS

Heather Aiken, Frank Porter Graham Child Development Institute
Teresa Taylor, Frank Porter Graham Child Development Institute



Reading with Intention: Repeated Read-Aloud Strategies to Engage All Children

Learn how to employ read alouds to enhance the language and literacy development of young children while addressing different learning styles. We'll discuss quality picture books and how to cultivate a love of reading. Also learn strategies for rereading books to promote language comprehension, creativity and connection and build the capacity to retell familiar stories independently.

PRESENTERS

Sarah Vaughn, East Carolina University
Jennifer Smith, East Carolina University



Practice-Based Coaching for Increasing Birth-to-Three Classroom Quality

This session will unpack the Practice-Based Coaching (PBC) model as a motivational tool for quality enhancement in birth-to-three classrooms. We'll explore how PBC uses providers' strengths to create changes in teaching practices that make a difference for children's healthy development. Participants will identify barriers to skill development and will strategize for solutions together.

PRESENTERS

Jennifer Anderson, NC Birth-to-Three Quality Initiative
Kim Peele, Martin-Pitt Partnership for Children
Demeka Bryant, Craven Smart Start, Inc.



Changing Lives, One Family at a Time

By using the Parent, Family, Community Engagement Framework, the group will discuss the road map for creating successful outcomes for children and families. We'll link the importance of engaging children in social-emotional learning, building parenting skills and developing positive relationships in families.

PRESENTERS

Nermin Overby, M.A., East Coast Migrant Head Start Project
Janie Trejo, B.S., East Coast Migrant Head Start Project
Sandra Heyward, M.S., M. Ed., East Coast Migrant Head Start Project



Playing with Literacy: Strategies for Teaching Literacy & Writing Through Play

How do you raise the level of literacy play for preschool or kindergarten children without making it a teacher-directed activity? In this session, we'll discuss key elements of literacy development and the teacher's role in engaging and expanding play. We'll also focus on how the play materials we make accessible (or don't make accessible) encourage (or limit) literacy play. With props, toys and a few well-timed questions, teachers can expand children's opportunities to develop literacy skills.

PRESENTER

Stephanie S. Nelson, Davie County Preschools



Building an Early Literacy System of Care: A Book Harvest Approach to Working with Communities on Programming

Book Harvest believes that literacy is one of the greatest civil rights issues of our time. We're dedicated to realizing a world in which all children and families flourish with access to tools, resources and supports that optimize their literacy. The Early Literacy System of Care delivers literacy equity through a unique continuum of four evidence-informed, parent-powered programs that ensure that literacy is nurtured for every child, from birth and over the first decade of life.

PRESENTERS

Jeff Quinn, Book Harvest
Benay Hicks, Book Harvest
Mary Mathew, Book Harvest



Empowering the “Third Teacher”: The Theory of Designing Dynamic Learning Environments

Early childhood learning environments play a significant role in the educational experiences of a young child. When intentionally designed, equipped and structured, a classroom space can act as a “third teacher.” In this session, we'll highlight concepts that empower children through leadership opportunities, autonomous learning experiences and collaborative interactions. Educators will receive tools and strategies for facilitating responsive practices that support self-agency, self-regulation and independent learning.

PRESENTERS

Gwendecka Conover, UNC Charlotte
Libbi Farmer, UNC Charlotte
Angela Wilson, PBS North Carolina



Empowering the “Third Teacher”: Designing Dynamic Learning Environments with PBS KIDS Activities

This workshop will show how PBS KIDS resources can be used to create dynamic learning environments that serve as the “third teacher.” The ideas, approaches and techniques will empower teachers to enhance their effectiveness by providing learners with sensory-based, open-ended, hands-on play opportunities that can be individualized to meet the needs of all children. Participants will also explore culturally sensitive strategies and resources for integrating activities that foster curiosity, collaboration and community.

PRESENTERS

Angela Wilson, PBS North Carolina
Celia Santos, PBS North Carolina



Inquiry Projects & DEI Mindsets

When educators establish practices that prioritize diversity, equity and inclusion (DEI), they can maximize student engagement and learning. This session will define DEI mindsets and how the use of inquiry projects can support their development in the classroom. Participants will be introduced to the cycle of inquiry and the role of the teacher. Presenter will provide examples from various early childhood classrooms and highlight strategies that educators can use in their instruction.

PRESENTERS

Jocelyn Ruffin, East Carolina University
Halle Dobbins, East Carolina University
Kennedy Poole, East Carolina University



Let’s Play Word Detective: Using Morphology to Read, Write & Create Words

Morphology, the study of words, plays an important role in learning to read and write. Learn practical ways to immerse younger readers in the fun of creating words from parts, setting the stage for later instruction in Greek and Latin roots. Beginning with inflectional endings and compound words, gradually increase their repertoire of prefixes and suffixes as they explore related words. Turn your students into word detectives through simple activities using prefixes, suffixes and root words.

PRESENTERS

Heather Aiken, Frank Porter Graham Child Development Institute
Teresa Taylor, Frank Porter Graham Child Development Institute



Discover the Winning Formula: Why Skipping Steps Is Never an Option

Research has shown a positive relationship between cognitive-skill development for students who have attended a high-quality pre-K program up to 13 years later. This session explores Jean Piaget’s Cognitive Development Theory and its importance to students’ inability to skip steps in their educational and intellectual journey. We’ll also learn how to identify necessary interventions for students’ cognitive developmental stages.

PRESENTER

Tanneshia Dukes, Teaching on the Flip Side, LLC



Increasing Access to Quality Childcare for Children Experiencing Homelessness

In this session, we'll explore homelessness, how to identify families experiencing homelessness and how to connect them with resources and benefits of quality childcare.

PRESENTERS

Sharmaine Joyner, The Salvation Army, Wake County
Deb Thompson, The Salvation Army, Wake County



Collaborative Problem-Solving: Policies & Practices that Minimize Childcare & Preschool Exclusion

This session is designed for childcare providers and preschool teachers who are supporting children exhibiting challenging behaviors and aim to minimize the use of short- or long-term removal from the program in response. We'll share a few core prevention-focused strategies for more effective management of challenging behaviors as well as links to practice-focused resources to extend your learning and share with staff members.

PRESENTER

Micere Keels, North Carolina Early Childhood Foundation



Doctors + Books + Young Children & Families = Health & Literacy Intersection for the Whole Child

Learn how books and shared reading support the overall health and well-being of children and their families. During this session, we will discuss the evidence-based Reach Out and Read model, how it is implemented in medical clinics (including its impact in North Carolina and across the country), the growing amount of evidence to support literacy as a key driver of health, why diverse book choices are important and how books can be a tool for caregivers and children.

PRESENTERS

Jackie Lorge, Reach Out and Read North Carolina
Katrissa Fisher, Reach Out and Read North Carolina

PRE PRE K K-1 2-3

NEW TIMES

PBS LearningMedia 101

In this hands-on session, explore the adaptive and multimodal possibilities of PBS LearningMedia. Participants will dive into research-based, classroom-ready digital learning experiences and tools to engage learners in exploring concepts that align with national and state standards. Join to watch, play, explore and share.

PRESENTER

Jennelle Lewis, PBS North Carolina

FAM

Invisible Sentence: Recognizing, Supporting & Advocating for Children of Incarcerated & Returning Parents

There are an estimated 2.7 million children in the U.S. with at least one incarcerated parent (20,000+ in NC), with reports showing that more than 5.2 million children (160,000 in NC) have experienced parental incarceration at some point in their lives. This session will focus on what we know about the children, the impacts of parental incarceration, available resources, ways to collaborate to meet their needs and the importance of hearing from the children and families themselves.

PRESENTER

Melissa Radcliff, Our Children's Place of Coastal Horizons

PBS NORTH CAROLINA STAFF

ADMINISTRATION & LEADERSHIP



KIMMERLY PAYTON
Education & Innovation
Program Assistant
kpayton@pbsnc.org



LATTINA RILEY
Division Office Manager
lriley@pbsnc.org



DR. MELISSA RIHM THIBAUT
Chief Education & Innovation Officer
mthibault@pbsnc.org

CHILDREN'S MEDIA & ENGAGEMENT



IZZY DANIELS-CONNOR
Educational Engagement Producer
idaniels@pbsnc.org



JEWEL AUSBY LOWE
Engagement Program Manager
jlowe@pbsnc.org



CYNTHIA PROFFITT
Program Coordinator,
Rootle Ambassador Program
cproffitt@pbsnc.org



LAUREN MCDOWELL PYLE
Director of Children's Media &
Engagement
lpyle@pbsnc.org

CREATIVE SERVICES



KENNA CUPP
Graphic Designer
kcupp@pbsnc.org

EDUCATION SERVICES



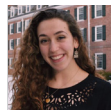
ALTHEA DAVIS
Education Services Program Manager
adavis@pbsnc.org



CHRISTA HOVIS
Event Specialist
chovis@pbsnc.org



DR. KRISTI MAIDA
Director of Education Services
kmaida@pbsnc.org



ALEXA VAGHENAS
Event Specialist
avaghenas@pbsnc.org

LEARNING DESIGN



PAULA EDELSON
Director of Learning Design
pedelson@pbsnc.org

MEDIA INNOVATION LAB



DAVID HUPPERT
Director of Media Innovation Lab
dhuppert@pbsnc.org



ISAAC KLEIN
Media Innovation Lab Digital Producer
iklein@pbsnc.org



DANIEL RINALDI
Project Manager
drinaldi@pbsnc.org

ROOTLE AMBASSADORS

Alexander County Donny Elder
Anson County Caroline Goins
Ashe County Sara Kesterson
Beaufort County Jennifer Walker
Bertie County April Swain
Cabarrus County Friday Okure
Caldwell County Julie Overby
Catawba County La'Gentry Ross
Chatham County Sheen Klaus
Cherokee County Brenda Millett
Clay County Bridget Wilson
Cleveland County April McClain
Craven County Dr. Sandra Plata-Potter
Cumberland County Yolanda Barnes
Davie County Allison Gupton
Duplin County Amanda Sanderson
Durham County Sessa Woodard
Durham County Steven Harrison
Edgecombe County Jackie Kearney
Forsyth County Brooke Hough
Gaston County Rene Crump
Graham County Mary Griffin
Greene County Yuvonka Davis
Guilford County LouMecia Staton
Harnett County Brandy Powers
Henderson County Latisha Miller
Hertford County Libby Grimes
Hoke County Annette Fernandez
Hyde County Sarah Crawford
Iredell County Sydney Taylor
Jackson County Jody Miller
Johnston County Dr. Faith Jackson
Jones County Tracy Campbell
Lee County Jessica Horton

Lenoir County Jennelle Lewis*
McDowell County Chastity Gouge
Mecklenburg County Erica Reid
Mitchell County Ruthie Styles
Montgomery County ... Monette Eggleston Ayers
Nash County Lena Jackson
New Hanover County Yolanda House
Northampton County Dr. Stacey Henderson
Onslow County Bethany Esau
Orange County Amanda Snow Bulgarelli
Pamlico County Michelle Shields
Pasquotank County Faith Mosley
Perquimans County Jenna Caldwell
Pitt County Deirdre Ingram
Randolph County Lisa Hayworth
Richmond County Dr. Katrina Chance
Robeson County Dr. Connie Locklear
Rockingham County Latasha Dalton
Rowan County Ermalyn Jaek
Sampson County Cory Kinnaman
Scotland County Jenna Maley
Stanly County Taler Miranda
Transylvania County Erika Brock
Vance County Arial Williams
Wake County Twanna Joyner Jones
Warren County Linda Reid Pitchford
Washington County Sherri Blount-Gilliam
Watauga County Jenna Kissel
Wayne County Tameka Allen
Wilson County Krista Keith
Yadkin County Robin Lockhart-Jackson

*PBS Early Learning Champion

EDUCATION SPECIALISTS

James Sebastian Byers

Khalilah Gilmore*

Kimberly Jones

Jason Lineberger

LaToya McCrimmon*

Celia Santos*

Angela Wilson*

** Presenting a breakout session*

SUPPORTERS

Mr. David E. (Woody) Clinard

Dianna & Jeffrey Goodman

Alice & Britt Preyer

The Donald & Elizabeth Cooke Foundation

Anonymous

•

The William R. Kenan, Jr. Charitable Trust

The Burroughs Wellcome Fund

The Dogwood Health Trust

The F.M. Kirby Foundation

The Dickson Foundation

The Unifour Foundation

•

ECU Health Maynard Children's Hospital

The North Carolina Department of Health & Human Services,
Division of Child Development & Early Education

The North Carolina Department of Natural & Cultural Resources

The North Carolina Department of Public Instruction

U.S. Department of Education

We gratefully acknowledge those whose financial support enables PBS North Carolina to provide equitable access to lifelong learning opportunities across our state and beyond.



See you next year!

– PBS NORTH CAROLINA EDUCATION

The Impact Early Childhood Education Summit is made possible with support from the North Carolina Department of Health and Human Services' Division of Child Development and Early Education, The William R. Kenan, Jr. Charitable Trust, The F.M. Kirby Foundation, ECU Health Maynard Children's Hospital and from Alice and Britt Preyer.

